

Recombinant Human SIGLEC5 protein, His-tagged

Cat. No. SIGLEC5-514H Lot. No. (See product label)

SPECIFICATION

Product Overview	Recombinant Human SIGLEC5 protein(NP_003821)(241-442 aa), fused to His tag, was expressed in E. coli.
Species	Human
Source	E.coli
ProteinLength	241-442 aa
Form	The purified protein was Lyophilized from sterile PBS (58mM Na ₂ HPO ₄ , 17mM NaH ₂ PO ₄ , 68mM NaCl, pH7.). 5 % trehalose and 5 % mannitol are added as protectants before lyophilization.
AA Sequence	IFRNGIALEILQNTSYLPVLEGQALRLLCDAPSNPPAHLISWFQGGSPALNATPISNTGIL ELRRVRSAAEEGGFTCRAQHPLGFLQIFLNLSVYSLPQLLGPSCSWEAEGLHCRCSF RARPAPSLCWRLEEKPLEGNSSQGSFKVNSSSAGPWANSSLILHGGLSSDLKVSCK AWNIYGSQSGSVLLLQGRSNLGTGVVPAALG
Purity	90%, by SDS-PAGE with Coomassie Brilliant Blue staining.
Storage	Short-term storage: Store at 2-8°C for (1-2 weeks). Long-term storage: Aliquot and store at -20°C to -80°C for up to 3 months, buffer containing 50% glycerol is recommended for reconstitution. Avoid repeat freeze-thaw cycles.

 Tel: 1-631-559-9269 1-516-512-3133

 Email: info@creative-biomart.com  Fax: 1-631-938-8127

 45-1 Ramsey Road, Shirley, NY 11967, USA

Reconstitution

Reconstitute at 0.25 g/μl in 200 μl sterile water for short-term storage.
 Reconstitution with 200 μl 50% glycerol solution is recommended for longer term storage (see Stability and Storage for more details).
 If a different concentration is needed for your purposes please adjust the reconstitution volume as required (please note: the ion concentration of the final solution will vary according to the volume used).
 Note: Centrifuge vial before opening. When reconstituting, gently pipet and wash down the sides of the vial to ensure full recovery of the protein into solution.

GENE INFORMATION

Gene Name	SIGLEC5 sialic acid binding Ig-like lectin 5 [Homo sapiens]
Official Symbol	SIGLEC5
Synonyms	SIGLEC5; sialic acid binding Ig-like lectin 5; CD33L2; sialic acid-binding Ig-like lectin 5; CD170; OB BP2; SIGLEC 5; CD33 antigen-like 2; OB-binding protein 2; obesity-binding protein 2; sialic acid-binding immunoglobulin-like lectin 5; OBBP2; OB-BP2; SIGLEC-5;
Gene ID	8778
mRNA Refseq	NM_003830
Protein Refseq	NP_003821
MIM	604200
UniProt ID	O15389

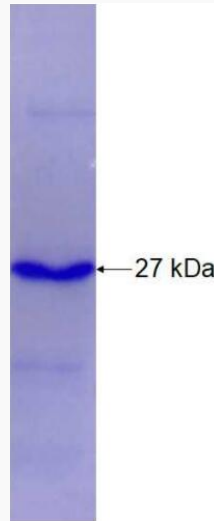
 Tel: 1-631-559-9269 1-516-512-3133

 Email: info@creative-biomart.com  Fax: 1-631-938-8127

 45-1 Ramsey Road, Shirley, NY 11967, USA



SDS-PAGE



Tel: 1-631-559-9269 1-516-512-3133

Email: info@creative-biomart.com Fax: 1-631-938-8127

45-1 Ramsey Road, Shirley, NY 11967, USA