

Recombinant Human SIGLEC5 Protein, Myc/DDK-tagged, C13 and N15-labeled

Cat. No. SIGLEC5-5941H Lot. No. (See product label)

SPECIFICATION

Product Overview

SIGLEC5 MS Standard C13 and N15-labeled recombinant protein (NP_003821) with a C-terminal MYC/DDK tag, was expressed in HEK293 cells.

Species

Human

Source

HEK293

Description

This gene encodes a member of the sialic acid-binding immunoglobulin-like lectin (Siglec) family. These cell surface lectins are characterized by structural motifs in the immunoglobulin (Ig)-like domains and sialic acid recognition sites in the first Ig V set domain. The encoded protein is a member of the CD33-related subset of Siglecs and inhibits the activation of several cell types including monocytes, macrophages and neutrophils. Binding of group B Streptococcus (GBS) to the encoded protein plays a role in GBS immune evasion.

Molecular Mass

60.7 kDa

AA Sequence

MLPLLLLPLLWGGSLQEKPVYELQVQKSVTVQEGLCVLVPCSFSPWRSWYSSPPL
 YVYWFRDGEIPYYAEVVATNNPDRRVKPETQGRFRLLGDVQKKNCSLSIGDARMED
 TGSYFFRVERGRDVKYSYQQNKLNLEVTALIEKPDHIFLEPLESGRPTRLSCSLPGS
 CEAGPPLTFSWTGNALSPLDPETTRSSSELTLP RPEDHGTNLTCQMKRQGAQVTTE
 RTVQLNVSYPQTITIFRNGIALEILQNTSYLPVLEGQALRLLCDAPSNPPAHLISWFQ
 GSPALNATPISNTGILELRRVRSAAEEGGFTCRAQHPLGFLQIFLNLSVYSLPQLLGPS

 Tel: 1-631-559-9269 1-516-512-3133

 Email: info@creative-biomart.com  Fax: 1-631-938-8127

 45-1 Ramsey Road, Shirley, NY 11967, USA

CSWEAEGLHCRCFSFRARPAPSLCWRLEEKPLEGNSSQGSFKVNSSSAGPWANSS
 LILHGGLSSDLKVSCKAWNIYGSQSGSVLLLQGRSNLGTGVVPAALGGAGVMALLCI
 CLCLIFFLIVKARRKQAAGRPEKMDDDEDPIMGTTITSGSRKKPWPDSAGDQASPPGDA
 PPLEEQKELHYASLSFSEMKSREPKDQEAPSTTEYSEIKTSKTRTRPLEQKLISEEDL
 AANDILDYKDDDDKV

Purity > 80% as determined by SDS-PAGE and Coomassie blue staining

Stability Stable for 3 months from receipt of products under proper storage and handling conditions.

Storage Store at -80 centigrade. Avoid repeated freeze-thaw cycles.

Concentration 50 µg/mL as determined by BCA

Storage Buffer 100 mM glycine, 25 mM Tris-HCl, pH 7.3.

GENE INFORMATION

Gene Name [SIGLEC5 sialic acid binding Ig-like lectin 5 \[Homo sapiens \(human\) \]](#)

Official Symbol [SIGLEC5](#)

Synonyms SIGLEC5; sialic acid binding Ig-like lectin 5; CD33L2; sialic acid-binding Ig-like lectin 5; CD170; OB BP2; SIGLEC 5; CD33 antigen-like 2; OB-binding protein 2; obesity-binding protein 2; sialic acid-binding immunoglobulin-like lectin 5; OBBP2; OB-BP2; SIGLEC-5;

Gene ID [8778](#)

mRNA Refseq [NM_003830](#)

 Tel: 1-631-559-9269 1-516-512-3133

 Email: info@creative-biomart.com  Fax: 1-631-938-8127

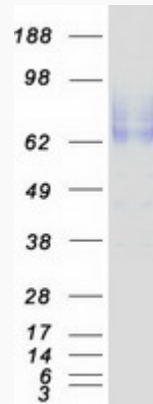
 45-1 Ramsey Road, Shirley, NY 11967, USA

Protein Refseq NP_003821

MIM 604200

UniProt ID O15389

SDS-PAGE



 Tel: 1-631-559-9269 1-516-512-3133

 Email: info@creative-biomart.com  Fax: 1-631-938-8127

 45-1 Ramsey Road, Shirley, NY 11967, USA