

## Recombinant Human SIGLEC5 protein, hFc-tagged

Cat. No. SIGLEC5-7330H Lot. No. (See product label)

### SPECIFICATION

<b>Product Overview</b>	Recombinant Human SIGLEC5 protein(O15389)(Glu17-Thr434), fused with C-terminal hFc tag, was expressed in HEK293.
<b>Species</b>	Human
<b>Source</b>	HEK293
<b>ProteinLength</b>	Glu17-Thr434
<b>Tag</b>	C-hFc
<b>Form</b>	Lyophilized from 0.22µm filtered solution in PBS (pH 7.4). Normally 5% trehalose is added as protectant before lyophilization.
<b>Molecular Mass</b>	The protein has a predicted MW of 73.1 kDa. Due to glycosylation, the protein migrates to 90-115 kDa based on Tris-Bis PAGE result.
<b>Endotoxin</b>	Less than 1EU per µg by the LAL method.
<b>Purity</b>	> 95% as determined by Tris-Bis PAGE; > 95% as determined by HPLC
<b>Storage</b>	Reconstituted protein stable at -80°C for 12 months, 4°C for 1 week. Use a manual defrost freezer and avoid repeated freeze-thaw cycles.
<b>Reconstitution</b>	Centrifuge tubes before opening. Reconstituting to a concentration more than 100

 Tel: 1-631-559-9269 1-516-512-3133

 Email: [info@creative-biomart.com](mailto:info@creative-biomart.com)  Fax: 1-631-938-8127

 45-1 Ramsey Road, Shirley, NY 11967, USA

µg/ml is recommended. Dissolve the lyophilized protein in distilled water.

## GENE INFORMATION

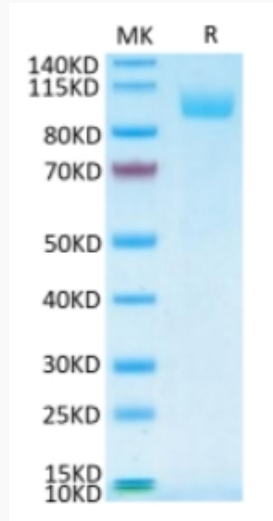
<b>Gene Name</b>	SIGLEC5 sialic acid binding Ig-like lectin 5 [ Homo sapiens ]
<b>Official Symbol</b>	SIGLEC5
<b>Synonyms</b>	SIGLEC5; sialic acid binding Ig-like lectin 5; CD33L2; sialic acid-binding Ig-like lectin 5; CD170; OB BP2; SIGLEC 5; CD33 antigen-like 2; OB-binding protein 2; obesity-binding protein 2; sialic acid-binding immunoglobulin-like lectin 5; OBBP2; OB-BP2; SIGLEC-5;
<b>Gene ID</b>	8778
<b>mRNA Refseq</b>	NM_003830
<b>Protein Refseq</b>	NP_003821
<b>MIM</b>	604200
<b>UniProt ID</b>	O15389

 Tel: 1-631-559-9269 1-516-512-3133

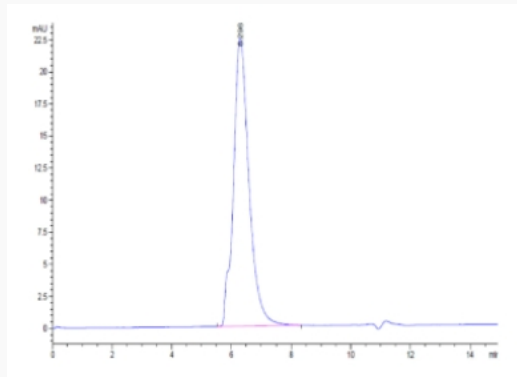
 Email: [info@creative-biomart.com](mailto:info@creative-biomart.com)  Fax: 1-631-938-8127

 45-1 Ramsey Road, Shirley, NY 11967, USA

**Tris-Bis PAGE**



**SEC-HPLC**



 Tel: 1-631-559-9269 1-516-512-3133

 Email: [info@creative-biomart.com](mailto:info@creative-biomart.com)  Fax: 1-631-938-8127

 45-1 Ramsey Road, Shirley, NY 11967, USA