

Recombinant Human SIGLEC5 protein, hFc-tagged, Biotinylated

Cat. No. SIGLEC5-8554H Lot. No. (See product label)

SPECIFICATION

Product Overview	Biotinylated Recombinant Human SIGLEC5 protein(O15389)(Glu17-Thr434), fused with C-terminal hFc tag, was expressed in HEK293.
Species	Human
Source	HEK293
ProteinLength	Glu17-Thr434
Tag	C-hFc
Conjugation/Label	Biotin
Form	Supplied as 0.22µm filtered solution in PBS (pH 7.4).
Molecular Mass	The protein has a predicted MW of 73.1 kDa. Due to glycosylation, the protein migrates to 90-115 kDa based on Tris-Bis PAGE result.
Endotoxin	Less than 1EU per µg by the LAL method.
Purity	> 95% as determined by Tris-Bis PAGE
Storage	Valid for 12 months from date of receipt when stored at -80°C. Recommend to aliquot the protein into smaller quantities for optimal storage. Please do not repeated freeze-

 Tel: 1-631-559-9269 1-516-512-3133

 Email: info@creative-biomart.com  Fax: 1-631-938-8127

 45-1 Ramsey Road, Shirley, NY 11967, USA

thaw cycles.

Reconstitution

It is recommended that sterile water be added to the vial to prepare a stock solution of 0.2 ug/ul. Centrifuge the vial at 4°C before opening to recover the entire contents.

Conjugation

Biotin

GENE INFORMATION

Gene Name

[SIGLEC5 sialic acid binding Ig-like lectin 5 \[Homo sapiens \]](#)

Official Symbol

[SIGLEC5](#)

Synonyms

SIGLEC5; sialic acid binding Ig-like lectin 5; CD33L2; sialic acid-binding Ig-like lectin 5; CD170; OB BP2; SIGLEC 5; CD33 antigen-like 2; OB-binding protein 2; obesity-binding protein 2; sialic acid-binding immunoglobulin-like lectin 5; OB BP2; OB-BP2; SIGLEC-5;

Gene ID

[8778](#)

mRNA Refseq

[NM_003830](#)

Protein Refseq

[NP_003821](#)

MIM

[604200](#)

UniProt ID

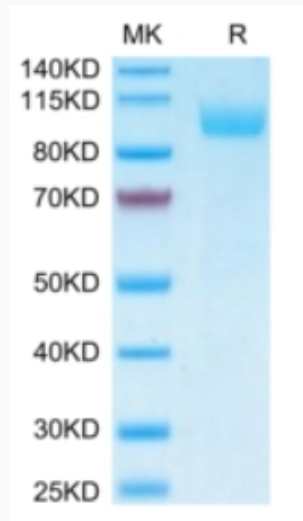
[O15389](#)

 Tel: 1-631-559-9269 1-516-512-3133

 Email: info@creative-biomart.com  Fax: 1-631-938-8127

 45-1 Ramsey Road, Shirley, NY 11967, USA

Tris-Bis PAGE



 Tel: 1-631-559-9269 1-516-512-3133

 Email: info@creative-biomart.com  Fax: 1-631-938-8127

 45-1 Ramsey Road, Shirley, NY 11967, USA