

Recombinant Human SIGLEC6 Protein, His-tagged

Cat. No. SIGLEC6-191H Lot. No. (See product label)

SPECIFICATION

Product Overview	Recombinant Human SIGLEC6 Protein with His tag was expressed in E. coli.
Species	Human
Source	E.coli
Description	<p>Two families of mammalian lectin-like adhesion molecules, the selectins and the sialoadhesins, bind glycoconjugate ligands in a sialic acid-dependent manner. The sialic acid-binding immunoglobulin superfamily lectins, designated Siglecs or sialoadhesins, recognize sialylated ligands and play a key role in mediating sialic-acid dependent binding to cells. Siglec-6, also called obesitybinding protein 1, is an adhesion molecule that is highly expressed in placental trophoblasts, as well as in peripheral blood leukocytes. Siglec-6 can bind both N-acetylneuraminic acid (Neu5Ac) and N-glycolylneuraminic acid (Neu5Gc), the two common sialic acids found in mammalian cells. Together with the other members of the Siglec family, Siglec-6 promotes cell-cell interactions and plays a roll in the innate and adaptive immune systems through glycan recognition.</p>
Molecular Mass	~35 kDa
AA Sequence	<p>QERRFQLEGPESLTVQEGLCVLPCLRPTTLPASYYGYGYWFLGADVPVATNDPD EEVQEETRGRFHLLWDP RRKNC SL SIRDARRRDNAA YFFRLKSKWMKYGYTSSKL SVRVMALTHRPNISIPGTLESGHPSNLTC SVPWVCEQGT PPIFSWMSAAPTSLGPRT TQSSVLTITPRPQDHSTNLTCQVTFPGAGVTMERTIQLNVS YAPQKVAISIFQGN SAA</p>

 Tel: 1-631-559-9269 1-516-512-3133

 Email: info@creative-biomart.com  Fax: 1-631-938-8127

 45-1 Ramsey Road, Shirley, NY 11967, USA



FKILQNTSSLPVLEGQALRLLCDADGNPPAHLSWFQGFPALNATPISNTGVLELPQV
GSAEEGDFTCRAQHPLGSLQISLSLFVHWKPEGRAGGV

Purity

Transferred into competent cells and the supernatant was purified by NI column affinity chromatography and the purity is > 85% (by SDS-PAGE).

Notes

For research use only, not for use in diagnostic procedure.

Storage

Store at 4 centigrade short term. Aliquot and store at -20 centigrade long term. Avoid freeze-thaw cycles.

Concentration

≥0.5 mg/mL

Storage Buffer

PBS, 4M Urea, pH7.4

GENE INFORMATION

Gene Name

SIGLEC6 sialic acid binding Ig-like lectin 6 [Homo sapiens (human)]

Official Symbol

SIGLEC6

Synonyms

SIGLEC6; sialic acid binding Ig-like lectin 6; CD33L, CD33L1; sialic acid-binding Ig-like lectin 6; CD327; OB BP1; SIGLEC 6; CD33 antigen-like 1; obesity-binding protein 1; CD33L; OBBP1; CD33L1; CD33L2; CDW327;

Gene ID

946

mRNA Refseq

NM_001177547

Protein Refseq

NP_001171018

Tel: 1-631-559-9269 1-516-512-3133

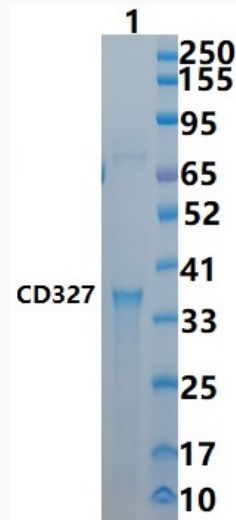
Email: info@creative-biomart.com Fax: 1-631-938-8127

45-1 Ramsey Road, Shirley, NY 11967, USA

MIM 604405

UniProt ID O43699

SDS-PAGE



 Tel: 1-631-559-9269 1-516-512-3133

 Email: info@creative-biomart.com  Fax: 1-631-938-8127

 45-1 Ramsey Road, Shirley, NY 11967, USA