

## Recombinant Human SIGLEC6 protein, Fc-tagged

Cat. No. SIGLEC6-339H Lot. No. (See product label)

### SPECIFICATION

<b>Product Overview</b>	Recombinant Human SIGLEC6 protein (Gln16-Val320), fused to human IgG1 Fc tag at C-terminus, was expressed in human 293 cells (HEK293).
<b>Species</b>	Human
<b>Source</b>	HEK293
<b>ProteinLength</b>	305
<b>Description</b>	Sialic acid-binding Ig-like lectin 6 (SIGLEC6) is also known as CD antigen CD327, CD33 antigen-like 1 (CD33L or CD33L1), Obesity-binding protein 1 (OB-BP1). SIGLEC6 belongs to the immunoglobulin superfamily and SIGLEC (sialic acid binding Ig-like lectin) family, which contains two Ig-like C2-type (immunoglobulin-like) domains and one Ig-like V-type (immunoglobulin-like) domain. SIGLEC6 mediates sialic-acid dependent binding to cells. SIGLEC6 binds to alpha-2,6-linked sialic acid. The sialic acid recognition site may be masked by cis interactions with sialic acids on the same cell surface.
<b>Form</b>	Lyophilized from 0.22 um filtered solution in 50 mM Tris, 100 mM Glycine, pH7.5, 10% trehalose.
<b>Molecular Mass</b>	The protein has a calculated MW of 60.3 kDa. As a result of glycosylation, the protein migrates as 80-90 kDa under reducing (R) condition, and 160-180 kDa under non-reducing (NR) condition (SDS-PAGE).

 Tel: 1-631-559-9269 1-516-512-3133

 Email: [info@creative-biomart.com](mailto:info@creative-biomart.com)  Fax: 1-631-938-8127

 45-1 Ramsey Road, Shirley, NY 11967, USA

<b>Endotoxin</b>	Less than 1.0 EU per ug by the LAL method.
<b>Purity</b>	>90% as determined by SDS-PAGE.
<b>Storage</b>	<p>For long term storage, the product should be stored at lyophilized state at -20 centigrade or lower.</p> <p>Please avoid repeated freeze-thaw cycles.</p> <p>This product is stable after storage at:</p> <p>-20 centigrade to -70 centigrade for 12 months in lyophilized state;            -70 centigrade for 3 months under sterile conditions after reconstitution.</p>
<b>Reconstitution</b>	It is recommended that sterile water be added to the vial to prepare a stock solution of 0.2 ug/ul. Centrifuge the vial at 4°C before opening to recover the entire contents.

## GENE INFORMATION

<b>Gene Name</b>	SIGLEC6
<b>Official Symbol</b>	SIGLEC6
<b>Synonyms</b>	SIGLEC6; sialic acid binding Ig-like lectin 6; CD33L, CD33L1; sialic acid-binding Ig-like lectin 6; CD327; OB BP1; SIGLEC 6; CD33 antigen-like 1; obesity-binding protein 1; CD33L; OBBP1; CD33L1; CD33L2; CDW327
<b>Gene ID</b>	946
<b>mRNA Refseq</b>	NM_001177547
<b>Protein Refseq</b>	NP_001171018
<b>MIM</b>	604405

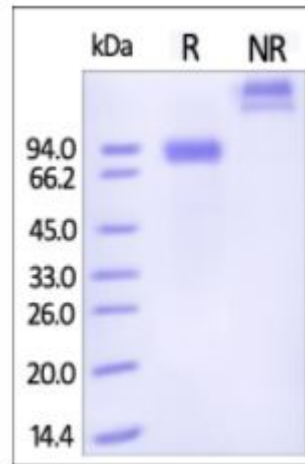
 Tel: 1-631-559-9269 1-516-512-3133

 Email: [info@creative-biomart.com](mailto:info@creative-biomart.com)  Fax: 1-631-938-8127

 45-1 Ramsey Road, Shirley, NY 11967, USA

UniProt ID

O43699

SDS-PAGE of  
SIGLEC6-339H

Human Siglec-6, Fc Tag on SDS-PAGE under reducing (R) and non-reducing (NR) conditions. The gel was stained overnight with Coomassie Blue. The purity of the protein is greater than 90%.

Tel: 1-631-559-9269 1-516-512-3133

Email: [info@creative-biomart.com](mailto:info@creative-biomart.com) Fax: 1-631-938-8127

45-1 Ramsey Road, Shirley, NY 11967, USA