

Recombinant Human SIGLEC6 Protein (Gln27-Ser331), C-Fc tagged

Cat. No. SIGLEC6-5344H Lot. No. (See product label)

SPECIFICATION

Product Overview	Recombinant human SIGLEC6 (Gln27-Ser331) fused with the C-terminal Fc tag was expressed in mammalian cells.
Species	Human
Source	Mammalian Cells
ProteinLength	Gln27-Ser331
Form	Lyophilized powder/frozen liquid
Molecular Mass	58.55 kDa
Endotoxin	< 1.0 EU/μg of the protein as determined by the LAL method.
Purity	>90% as determined by SDS-PAGE.
Notes	For research use only.
Storage	Use a manual defrost freezer and avoid repeated freeze thaw cycles. Store at 2 to 8 centigrade for one week. Store at -20 to -80 centigrade for twelve months from the date of receipt.
Storage Buffer	Supplied as solution form in PBS or lyophilized from PBS.

 Tel: 1-631-559-9269 1-516-512-3133

 Email: info@creative-biomart.com  Fax: 1-631-938-8127

 45-1 Ramsey Road, Shirley, NY 11967, USA

Reconstitution Reconstitute in sterile water for a stock solution.

Shipping They are shipped out with dry ice/blue ice unless customers require otherwise.

GENE INFORMATION

Gene Name SIGLEC6 sialic acid binding Ig-like lectin 6 [Homo sapiens (human)]

Official Symbol SIGLEC6

Synonyms SIGLEC6; sialic acid binding Ig-like lectin 6; CD33L, CD33L1; sialic acid-binding Ig-like lectin 6; CD327; OB BP1; SIGLEC 6; CD33 antigen-like 1; obesity-binding protein 1; CD33L; OBBP1; CD33L1; CD33L2; CDW327;

Gene ID 946

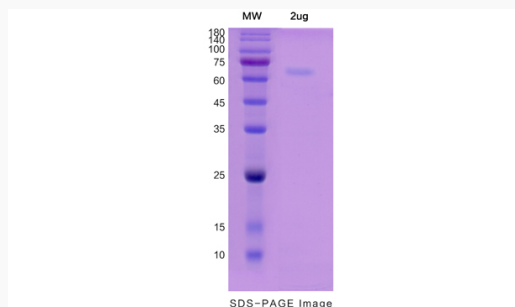
mRNA Refseq NM_001177547

Protein Refseq NP_001171018

MIM 604405

UniProt ID O43699

SDS-PAGE



Tel: 1-631-559-9269 1-516-512-3133

Email: info@creative-biomart.com Fax: 1-631-938-8127

45-1 Ramsey Road, Shirley, NY 11967, USA