

Recombinant Human SIGLEC6 protein, His-Avi-tagged

Cat. No. SIGLEC6-559H Lot. No. (See product label)

SPECIFICATION

Product Overview	Recombinant Human SIGLEC6 protein(O43699-3)(Gln27-Val331), fused with C-terminal His and Avi tag, was expressed in HEK293.
Species	Human
Source	HEK293
ProteinLength	Gln27-Val331
Tag	C-His-Avi
Form	Supplied as 0.22µm filtered solution in PBS (pH 7.4).
Molecular Mass	The protein has a predicted MW of 36.6 kDa. Due to glycosylation, the protein migrates to 55-70 kDa based on Tris-Bis PAGE result.
Endotoxin	Less than 1EU per µg by the LAL method.
Purity	> 95% as determined by Tris-Bis PAGE; > 95% as determined by HPLC
Storage	Valid for 12 months from date of receipt when stored at -80°C; Recommend to aliquot the protein into smaller quantities for optimal storage. Please do not repeated freeze-thaw cycles.
Reconstitution	It is recommended that sterile water be added to the vial to prepare a stock solution of

 Tel: 1-631-559-9269 1-516-512-3133

 Email: info@creative-biomart.com  Fax: 1-631-938-8127

 45-1 Ramsey Road, Shirley, NY 11967, USA



0.2 ug/ul. Centrifuge the vial at 4°C before opening to recover the entire contents.

GENE INFORMATION

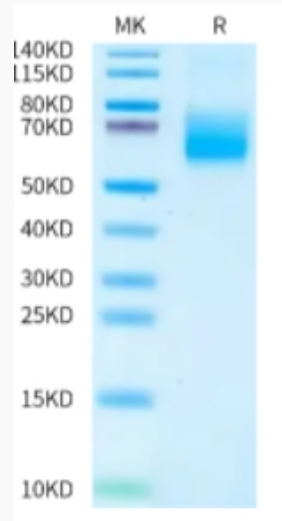
Gene Name	SIGLEC6 sialic acid binding Ig-like lectin 6 [Homo sapiens]
Official Symbol	SIGLEC6
Synonyms	SIGLEC6; sialic acid binding Ig-like lectin 6; CD33L, CD33L1; sialic acid-binding Ig-like lectin 6; CD327; OB BP1; SIGLEC 6; CD33 antigen-like 1; obesity-binding protein 1; CD33L; OBBP1; CD33L1; CD33L2; CDW327;
Gene ID	946
mRNA Refseq	NM_001177547
Protein Refseq	NP_001171018
MIM	604405
UniProt ID	O43699

Tel: 1-631-559-9269 1-516-512-3133

Email: info@creative-biomart.com Fax: 1-631-938-8127

45-1 Ramsey Road, Shirley, NY 11967, USA

Tris-Bis PAGE



 Tel: 1-631-559-9269 1-516-512-3133

 Email: info@creative-biomart.com  Fax: 1-631-938-8127

 45-1 Ramsey Road, Shirley, NY 11967, USA