

# Active Recombinant Human SIGLEC6 Homodimer Protein, His tagged

Cat. No. SIGLEC6-56H Lot. No. (See product label)

## SPECIFICATION

**Product Overview** Siglec-6 protein dimer contains a Siglec-6 extracellular domain (UniProt# O43699) fused with a proprietary cis-dimer motif followed by a His tag at the C-terminus was expressed in HEK293T.

**Species** Human

**Source** HEK293T


**ProteinLength** 27-347 aa

**Description** Human sialic acid-binding Ig-like lectin 6 (Siglec-6) is a Type I transmembrane protein, a member of the Siglec family, part of the immunoglobulin superfamily, and a multifunctional immune regulator. Siglec-6 is also known as Cluster of Differentiation 327 (CD327), CD33-like (CD33L), CD33L1, CD33L2, and CDW327. Siglec-6 contains an extracellular domain with an N-terminal V-type immunoglobulin domain (Ig domain) and two C2-type Ig domains followed by a transmembrane domain and cytoplasmic signaling domain consisting of the immunoreceptor tyrosine-based inhibitory motif (ITIM). Siglec-6 is expressed on trophoblasts and highly expressed on mast cells from a variety of tissues. It binds sialylated glycans on cell surfaces or secreted proteins, modulating cell-cell interactions and immune responses. The presence of Siglec-6 on various kinds of leukemias has made it an emerging target for cancer therapeutics.

**Molecular Mass** 87 kDa

 Tel: 1-631-559-9269 1-516-512-3133

 Email: [info@creative-biomart.com](mailto:info@creative-biomart.com)  Fax: 1-631-938-8127

 45-1 Ramsey Road, Shirley, NY 11967, USA

<b>Purity</b>	Greater than 90% dimer form as determined by SDS-PAGE under non-reducing condition
<b>Application</b>	Verified Applications: ELISA for Siglec-6-specific antibody binding assays. Suggested Applications: SPR & BLI for Siglec-6-specific antibody binding assays. Animal immunization, RUO.
<b>Storage</b>	Store at -80 centigrade.
<b>Storage Buffer</b>	0.22µm filtered PBS, pH 7.4
<b>Shipping</b>	Frozen Dry Ice

## GENE INFORMATION

<b>Gene Name</b>	<a href="#">SIGLEC6 sialic acid binding Ig-like lectin 6 [ Homo sapiens (human) ]</a>
<b>Official Symbol</b>	<a href="#">SIGLEC6</a>
<b>Synonyms</b>	SIGLEC6; sialic acid binding Ig-like lectin 6; CD33L, CD33L1; sialic acid-binding Ig-like lectin 6; CD327; OB BP1; SIGLEC 6; CD33 antigen-like 1; obesity-binding protein 1; CD33L; OBBP1; CD33L1; CD33L2; CDW327;
<b>Gene ID</b>	<a href="#">946</a>
<b>mRNA Refseq</b>	<a href="#">NM_001177547</a>
<b>Protein Refseq</b>	<a href="#">NP_001171018</a>
<b>MIM</b>	<a href="#">604405</a>

 Tel: 1-631-559-9269 1-516-512-3133

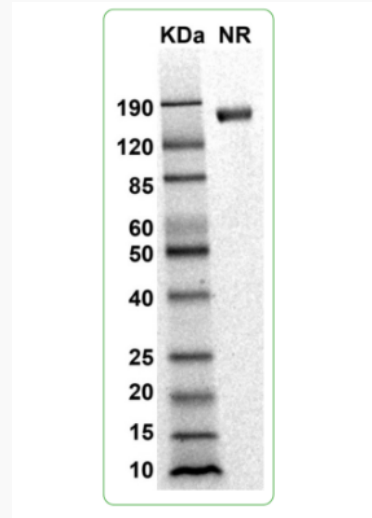
 Email: [info@creative-biomart.com](mailto:info@creative-biomart.com)  Fax: 1-631-938-8127

 45-1 Ramsey Road, Shirley, NY 11967, USA

UniProt ID

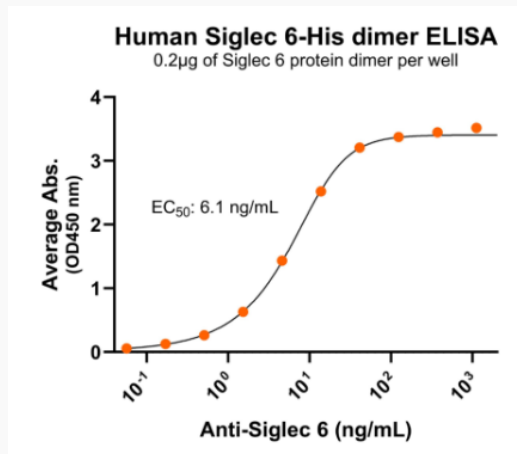
O43699

SDS-PAGE and WB



MW: Molecular Weight marker reduced condition NR: Siglec 6 dimer under non-reduced condition

Bioactivity-Antibody Binding



Immobilized human Siglec 6 protein dimer, His Tag at 2 µg/mL (100 µL/well) can

Tel: 1-631-559-9269 1-516-512-3133

Email: [info@creative-biomart.com](mailto:info@creative-biomart.com) Fax: 1-631-938-8127

45-1 Ramsey Road, Shirley, NY 11967, USA



bind anti-human Siglec 6 monoclonal antibody with half maximal effective concentration (EC50) range of 3.1-12.2 ng/mL (QC tested).

 Tel: 1-631-559-9269 1-516-512-3133

 Email: [info@creative-biomart.com](mailto:info@creative-biomart.com)  Fax: 1-631-938-8127

 45-1 Ramsey Road, Shirley, NY 11967, USA