

Recombinant Human SIGLEC7 protein, His & S-tagged

Cat. No. SIGLEC7-1798H Lot. No. (See product label)

SPECIFICATION

Product Overview	Recombinant Human SIGLEC7 aa. (Lys381~Lys467 (Accession # Q9Y286)) fused with N-terminal His & S tag was produced in E. coli cells.
Species	Human
Source	E.coli
ProteinLength	Lys381~Lys467
Form	Freeze-dried powder
Molecular Mass	19kDa as determined by SDS-PAGE reducing conditions.
Endotoxin	<1.0EU per 1ug (determined by the LAL method)
Purity	>95%
Characteristic	The isoelectric point is 5.6.
Applications	SDS-PAGE; WB; ELISA; IP.
Stability	The thermal stability is described by the loss rate of the target protein. The loss rate was determined by accelerated thermal degradation test, that is, incubate the protein at 37°C for 48h, and no obvious degradation and precipitation were observed. (Referring from China Biological Products Standard, which was calculated by the

 Tel: 1-631-559-9269 1-516-512-3133

 Email: info@creative-biomart.com  Fax: 1-631-938-8127

 45-1 Ramsey Road, Shirley, NY 11967, USA

Arrhenius equation.) The loss of this protein is less than 5% within the expiration date under appropriate storage condition.

Storage

Avoid repeated freeze/thaw cycles. Store at 2-8°C for one month. Aliquot and store at -80°C for 12 months.

Storage Buffer

Supplied as lyophilized form in 20mM Tris, 500mM NaCl, pH8.0, containing 1mM EDTA, 1mM DTT, 0.01% sarcosyl, 5% trehalose, and preservative.

Reconstitution

Reconstitute in ddH₂O.

GENE INFORMATION

Gene Name

[SIGLEC7 sialic acid binding Ig like lectin 7 \[Homo sapiens \(human\) \]](#)

Official Symbol

[SIGLEC7](#)

Synonyms

FBLN5; fibulin 5; EVEC; UP50; ADCL2; ARMD3; DANCE; ARCL1A; FIBL-5; HNARMD; fibulin-5; developmental arteries and neural crest EGF-like protein; testis tissue sperm-binding protein Li 75n; urine p50 protein

Gene ID

[27036](#)

mRNA Refseq

[NM_001277201.1](#)

Protein Refseq

[NP_001264130.1](#)

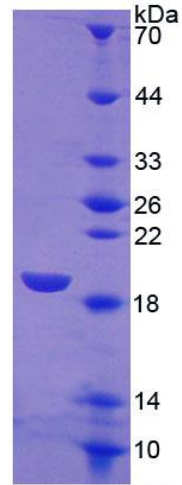
UniProt ID

[Q9Y286](#)

 Tel: 1-631-559-9269 1-516-512-3133

 Email: info@creative-biomart.com  Fax: 1-631-938-8127

 45-1 Ramsey Road, Shirley, NY 11967, USA



15% SDS-PAGE

SDS-PAGE

Tel: 1-631-559-9269 1-516-512-3133

Email: info@creative-biomart.com Fax: 1-631-938-8127

45-1 Ramsey Road, Shirley, NY 11967, USA