

Recombinant Human SIGLEC7 Protein, 19-353aa, C-hlgG-His tagged

Cat. No. SIGLEC7-33H **Lot. No.** (See product label)

SPECIFICATION

Product Overview	Recombinant human SIGLEC7 protein (19-353aa), fused to hlgG-His-tag at C-terminus, was expressed in insect cell and purified by using conventional chromatography techniques.
Species	Human
Source	Baculovirus
ProteinLength	19-353aa
Description	Predicted to enable sialic acid binding activity. Predicted to be involved in cell adhesion. Predicted to be integral component of plasma membrane. Predicted to be active in plasma membrane.
Form	Liquid
Molecular Mass	64.2 kDa (577aa)
AA Sequence	<p>QKSNRKDYSLTMQSSVTVQEGMCVHVRCSFSYPVDSQTDSDPVGHWFRAGNDI SWKAPVATNNPAWAVQEETRDRFLLGDPQTKNCTLSIRDARMSDAGRYFFRMEK GNIKWNYKYDQLSVNVTALTHRPNILIPGTLESGCFQNLTCVWPWACEQGTPPMISW MGTSVSPLHPSTTRSSVLTLPQPQHGGTSLTCQVTLPGAGVTTNRTIQLNVSYPQ NLTVTVFQEGTASTALGNSSLSVLEGQSLRLVCAVDSNPPARLSWTWRSRLTLYP SQPSNPLVLELQVHLGDEGEFTCRAQNSLGSQHVSLSLQQEYTGKMRPVSGVLL</p>

 Tel: 1-631-559-9269 1-516-512-3133

 Email: info@creative-biomart.com  Fax: 1-631-938-8127

 45-1 Ramsey Road, Shirley, NY 11967, USA

Endotoxin	< 1 EU/μg protein by LAL
Purity	> 90% as determined by SDS-PAGE
Applications	SDS-PAGE
Storage	Can be stored at +2 to +8 centigrade for 1 week. For long term storage, aliquot and store at -20 to -80 centigrade . Avoid repeated freezing and thawing cycles.
Concentration	0.5 mg/mL (determined by absorbance at 280nm)
Storage Buffer	Phosphate-Buffered Saline (pH 7.4) containing 10% glycerol
References	<ol style="list-style-type: none"> 1. Crocker., et al. (2001) Trends Immunol. 22:337-342. 2. Nicoll G., et al. (1999) J. Biol. Chem. 274:34089-34095.

GENE INFORMATION

Gene Name	SIGLEC7 sialic acid binding Ig like lectin 7 [Homo sapiens (human)]
Official Symbol	SIGLEC7
Synonyms	SIGLEC7; sialic acid binding Ig like lectin 7; p75; QA79; AIRM1; CD328; AIRM-1; CDw328; D-siglec; SIGLEC-7; SIGLECP2; SIGLEC19P; p75/AIRM1; sialic acid-binding Ig-like lectin 7; QA79 membrane protein; adhesion inhibitory receptor molecule 1, siglec-7; sialic acid binding immunoglobulin-like lectin 7
Gene ID	27036
mRNA Refseq	NM_014385

 Tel: 1-631-559-9269 1-516-512-3133

 Email: info@creative-biomart.com  Fax: 1-631-938-8127

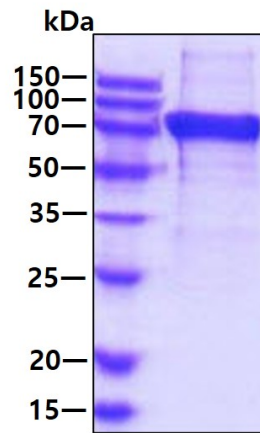
 45-1 Ramsey Road, Shirley, NY 11967, USA

Protein Refseq NP_055200

MIM 604410

UniProt ID Q9Y286

SDS-PAGE



3 μ g by SDS-PAGE under reducing condition and visualized by coomassie blue stain.

 Tel: 1-631-559-9269 1-516-512-3133

 Email: info@creative-biomart.com  Fax: 1-631-938-8127

 45-1 Ramsey Road, Shirley, NY 11967, USA