

Recombinant Human SIGLEC7 Protein (Met1-Leu353), C-Fc tagged

Cat. No. SIGLEC7-5805H Lot. No. (See product label)

SPECIFICATION

Product Overview	Recombinant human SIGLEC7 (Met1-Leu353) fused with the C-terminal Fc tag was expressed in mammalian cells.
Species	Human
Source	Mammalian Cells
ProteinLength	Met1-Leu353
Form	Lyophilized powder/frozen liquid
Molecular Mass	65.45 kDa
Purity	> 90 % as determined by SDS-PAGE
Notes	For research use only.
Storage	Use a manual defrost freezer and avoid repeated freeze thaw cycles. Store at 2 to 8 centigrade for one week. Store at -20 to -80 centigrade for twelve months from the date of receipt.
Storage Buffer	Supplied as solution form in PBS, pH 7.5 or lyophilized from PBS, pH 7.5.
Reconstitution	Reconstitute in sterile water for a stock solution.

 Tel: 1-631-559-9269 1-516-512-3133

 Email: info@creative-biomart.com  Fax: 1-631-938-8127

 45-1 Ramsey Road, Shirley, NY 11967, USA

Shipping They are shipped out with dry ice/blue ice unless customers require otherwise.

GENE INFORMATION

Gene Name SIGLEC7 sialic acid binding Ig-like lectin 7 [Homo sapiens (human)]

Official Symbol SIGLEC7

Synonyms SIGLEC7; sialic acid binding Ig-like lectin 7; sialic acid-binding Ig-like lectin 7; CD328; p75/AIRM1; QA79; SIGLEC 7; AIRM-1; QA79 membrane protein; sialic acid binding immunoglobulin-like lectin 7; adhesion inhibitory receptor molecule 1, siglec-7; p75; AIRM1; CDw328; D-siglec; SIGLEC-7;

Gene ID 27036

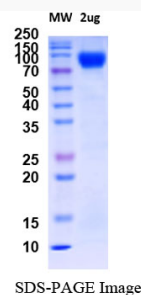
mRNA Refseq NM_014385

Protein Refseq NP_055200

MIM 604410

UniProt ID Q9Y286

SDS-PAGE



Tel: 1-631-559-9269 1-516-512-3133

Email: info@creative-biomart.com Fax: 1-631-938-8127

45-1 Ramsey Road, Shirley, NY 11967, USA