

Recombinant Human SIGLEC8 Protein, Myc/DDK-tagged, C13 and N15-labeled

Cat. No. SIGLEC8-1014H Lot. No. (See product label)

SPECIFICATION

Product Overview	SIGLEC8 MS Standard C13 and N15-labeled recombinant protein (NP_055257) with a C-terminal MYC/DDK tag, was expressed in HEK293 cells.
Species	Human
Source	HEK293
Description	Sialic acid-binding immunoglobulin (Ig)-like lectins, or SIGLECs (e.g., CD33), are a family of type 1 transmembrane proteins each having a unique expression pattern, mostly in hemopoietic cells. SIGLEC8 is a member of the CD33-like subgroup of SIGLECs, which are localized to 19q13.3-q13.4 and have 2 conserved cytoplasmic tyrosine-based motifs: an immunoreceptor tyrosine-based inhibitory motif, or ITIM, and a motif homologous to one identified in signaling lymphocyte activation molecule (SLAM) that mediates an association with SLAM-associated protein.
Molecular Mass	54.1 kDa
AA Sequence	<pre> MLLLLLLLPLLWGTKGMEGDRQYGDGYLLQVQELVTVQEGLCVHVPSCFSYPQDG WTSDPVGHYWFRAGDRPYQDAPVATNPNPDREVQAETQGRFQLLGDIWSNDCSL SIRDARKRDKGSYFFRLERGSMSKWSYKSQLNYKTKQLSVFVTALTHRPDILILGTLES GHPRNLTCSPWACKQGTPPMISWIGASVSSPGPTTARSSVLTLPKPQDHGTSLT CQVTLPGTGVTSTVRLDVSYPWNLTMTVFQGDASTALGNGSSLSVLEGQSL RLVCAVNSNPPARLSWTRGSLTLCPSRSSNPGLLELPRVHVRDEGEFTCRAQNAQ </pre>

 Tel: 1-631-559-9269 1-516-512-3133

 Email: info@creative-biomart.com  Fax: 1-631-938-8127

 45-1 Ramsey Road, Shirley, NY 11967, USA

GSQHISLSLSLQNEGTGTSRPVSQVTLAAVGGAGATALAFLSFCIIFIIVRSCRKKSAR
 PAAGVGDGTGMEDAKAIRGSASQGPLTESWKDGNPLKKPPPAVAPSSGEEGELHYA
 TLSFHKVKPQDPQGQEATDSEYSEIKIHKRETAETQAACLRNHNPSSKEVRGTRTRPL
 EQKLISEEDLAANDILDYKDDDDKV

Purity > 80% as determined by SDS-PAGE and Coomassie blue staining

Stability Stable for 3 months from receipt of products under proper storage and handling conditions.

Storage Store at -80 centigrade. Avoid repeated freeze-thaw cycles.

Concentration 50 µg/mL as determined by BCA

Storage Buffer 100 mM glycine, 25 mM Tris-HCl, pH 7.3.

GENE INFORMATION

Gene Name [SIGLEC8 sialic acid binding Ig-like lectin 8 \[Homo sapiens \(human\) \]](#)

Official Symbol [SIGLEC8](#)

Synonyms SIGLEC8; sialic acid binding Ig-like lectin 8; sialic acid-binding Ig-like lectin 8; MGC59785; SAF2; SIGLEC 8; SIGLEC8L; SAF-2; CDw329; sialoadhesin family member 2; SIGLEC-8;

Gene ID [27181](#)

mRNA Refseq [NM_014442](#)

Protein Refseq [NP_055257](#)

 Tel: 1-631-559-9269 1-516-512-3133

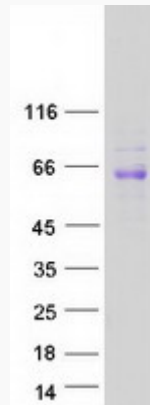
 Email: info@creative-biomart.com  Fax: 1-631-938-8127

 45-1 Ramsey Road, Shirley, NY 11967, USA

MIM 605639

UniProt ID Q9NYZ4

SDS-PAGE



 Tel: 1-631-559-9269 1-516-512-3133

 Email: info@creative-biomart.com  Fax: 1-631-938-8127

 45-1 Ramsey Road, Shirley, NY 11967, USA