

## Recombinant Human SIGLEC8 protein, hFc-tagged

Cat. No. SIGLEC8-138H Lot. No. (See product label)

### SPECIFICATION

<b>Product Overview</b>	Recombinant Human siglec 8 Protein is expressed from mammalian with a hFc Tag at the C-terminal. It contains Met17-Ala363.
<b>Species</b>	Human
<b>Source</b>	HEK293
<b>ProteinLength</b>	It contains Met17-Ala363.
<b>Description</b>	Siglec-8, also known as SAF, is an approximately 75 kDa transmembrane glycoprotein in the Siglec family of sialic acid-binding immune regulatory molecules. Mature human Siglec-8 consists of a 347 amino acid (aa) extracellular domain (ECD) with three Ig-like domains. Putative adhesion molecule that mediates sialic-acid dependent binding to red blood cells. Preferentially binds to alpha-2,3-linked sialic acid. Also binds to alpha-2,6-linked sialic acid.
<b>Form</b>	Supplied as 0.22um filtered solution in PBS (pH 7.4).
<b>Molecular Mass</b>	The protein has a predicted MW of 64.6 kDa. Due to glycosylation, the protein migrates to 70-82KDa based on Bis-Tris PAGE result.
<b>Endotoxin</b>	Less than 0.05 EU per ug by the LAL method.
<b>Purity</b>	> 95% as determined by Tris-Bis PAGE; > 95% as determined by HPLC

 Tel: 1-631-559-9269 1-516-512-3133

 Email: [info@creative-biomart.com](mailto:info@creative-biomart.com)  Fax: 1-631-938-8127

 45-1 Ramsey Road, Shirley, NY 11967, USA

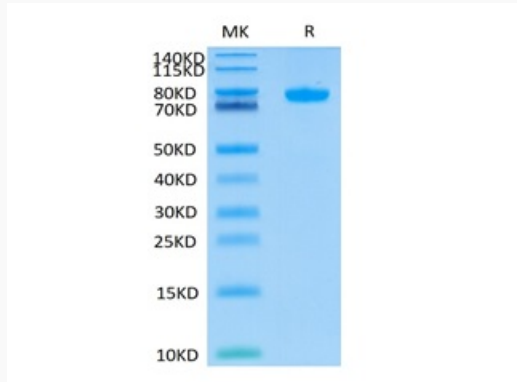
<b>Storage</b>	The product should be stored at -70°C. Please do not repeated freeze-thaw cycles.
<b>Reconstitution</b>	It is recommended that sterile water be added to the vial to prepare a stock solution of 0.2 ug/ul. Centrifuge the vial at 4°C before opening to recover the entire contents.
<b>GENE INFORMATION</b>	
<b>Gene Name</b>	SIGLEC8 sialic acid binding Ig-like lectin 8 [ Homo sapiens ]
<b>Official Symbol</b>	SIGLEC8
<b>Synonyms</b>	CD329 antigen; CDw329; MGC59785; SAF2; SAF2SAF-2; sialic acid binding Ig-like lectin 8; Sialoadhesin family member 2; Siglec8; Siglec-8; SIGLEC8L; SIGLEC8Lsialic acid-binding Ig-like lectin 8
<b>Gene ID</b>	27181
<b>mRNA Refseq</b>	NM_014442
<b>Protein Refseq</b>	NP_055257
<b>MIM</b>	605639
<b>UniProt ID</b>	Q9NYZ4

 Tel: 1-631-559-9269 1-516-512-3133

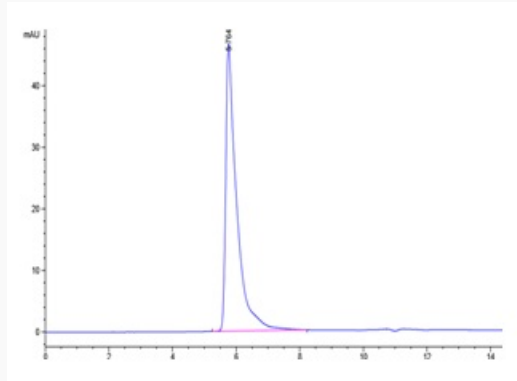
 Email: [info@creative-biomart.com](mailto:info@creative-biomart.com)  Fax: 1-631-938-8127

 45-1 Ramsey Road, Shirley, NY 11967, USA

**Tris-Bis PAGE**



**HPLC data**



 Tel: 1-631-559-9269 1-516-512-3133

 Email: [info@creative-biomart.com](mailto:info@creative-biomart.com)  Fax: 1-631-938-8127

 45-1 Ramsey Road, Shirley, NY 11967, USA