

Recombinant Full Length Human SIGLEC8 Protein, C-Flag-tagged

Cat. No. SIGLEC8-1776HFL **Lot. No.** (See product label)

SPECIFICATION

| | |
|-------------------------|--|
| Product Overview | Recombinant Full Length Human SIGLEC8 Protein, fused to Flag-tag at C-terminus, was expressed in Mammalian cells. |
| Species | Human |
| Source | Mammalian Cells |
| Description | Sialic acid-binding immunoglobulin (Ig)-like lectins, or SIGLECs (e.g., CD33 (MIM 159590)), are a family of type 1 transmembrane proteins each having a unique expression pattern, mostly in hemopoietic cells. SIGLEC8 is a member of the CD33-like subgroup of SIGLECs, which are localized to 19q13.3-q13.4 and have 2 conserved cytoplasmic tyrosine-based motifs: an immunoreceptor tyrosine-based inhibitory motif, or ITIM (see MIM 604964), and a motif homologous to one identified in signaling lymphocyte activation molecule (SLAM; MIM 603492) that mediates an association with SLAM-associated protein. |
| Form | 25 mM Tris HCl, pH 7.3, 100 mM glycine, 10% glycerol. |
| Molecular Mass | 53.9 kDa |
| AA Sequence | MLLLLLLLPLLWGTKGMEGDRQYGDGYLLQVQELVTVQEGLCVHVPCSFSSYPQDG WTSDPVGHYWFRAG DRPYQDAPVATNNPDREVQAETQGRFQLLGDIWSNDCSL SIRDARKRDKGSYFFRLERGS MKWSYKSQLN YKTKQLSVFVTALHTRPDILILGTLE SGHPRNLTCSVPWACKQGTPPMISWIGASVSSPGPTTARSSVLT LTPKPQDHGTSL |

 Tel: 1-631-559-9269 1-516-512-3133

 Email: info@creative-biomart.com  Fax: 1-631-938-8127

 45-1 Ramsey Road, Shirley, NY 11967, USA

TCQVTLPGTGVTTTSTVRLDVSYPWNLTMTVFQGDASTALGNGSSLSVLEGQS
 LR LVCAVNSNPPARLSWTRGSLTLCPSRSSNPGLLELPRVHVRDEGEFTCRAQNA
 QGSQHISLSLSLQNEGT GTSRPVSQVTLAAVGGAGATALAFLSFCIIFIIVRSCRKKS
 ARPAAGVGDGTGMEDAKAIRGSASQGPLTE SWKDG NPLKKPPPAVAPSSGEEGELH
 YATLSFHKVKPQDPQGQEATDSEYSEIKIHKRETAETQAELRNH NPSSKEVRG TRT
 RPLEQKLISEEDLAANDILDYKDDDDKV

| | |
|-------------------------|---|
| Purity | > 80% as determined by SDS-PAGE and Coomassie blue staining. |
| Stability | Stable for 12 months from the date of receipt of the product under proper storage and handling conditions. Avoid repeated freeze-thaw cycles. |
| Storage | Store at -80 centigrade. |
| Concentration | >50 ug/mL as determined by microplate BCA method. |
| Preparation | Recombinant protein was captured through anti-DDK affinity column followed by conventional chromatography steps. |
| Protein Families | Druggable Genome, Transmembrane |
| Full Length | Full L. |

GENE INFORMATION

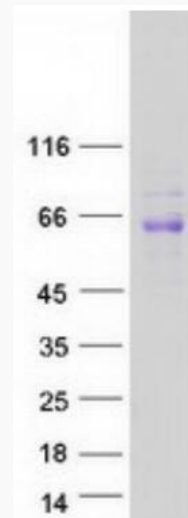
| | |
|------------------------|---|
| Gene Name | SIGLEC8 sialic acid binding Ig like lectin 8 [Homo sapiens (human)] |
| Official Symbol | SIGLEC8 |
| Synonyms | SAF2; SIGLEC-8; SIGLEC8L |

 Tel: 1-631-559-9269 1-516-512-3133

 Email: info@creative-biomart.com  Fax: 1-631-938-8127

 45-1 Ramsey Road, Shirley, NY 11967, USA

| | |
|----------------|-------------|
| Gene ID | 27181 |
| mRNA Refseq | NM_014442.3 |
| Protein Refseq | NP_055257.2 |
| MIM | 605639 |
| UniProt ID | Q9NYZ4 |



Coomassie blue staining of purified SIGLEC8 protein.

Tel: 1-631-559-9269 1-516-512-3133

Email: info@creative-biomart.com Fax: 1-631-938-8127

45-1 Ramsey Road, Shirley, NY 11967, USA