

Recombinant Human SIGLEC8 protein, His & GST-tagged

Cat. No. SIGLEC8-1799H Lot. No. (See product label)

SPECIFICATION

Product Overview	Recombinant Human SIGLEC8 aa. (Gly70~Ser336 (Accession # Q9NYZ4)) fused with N-terminal His & GST tag was produced in E. coli cells.
Species	Human
Source	E.coli
ProteinLength	Gly70~Ser336
Description	Sialic acid-binding immunoglobulin (Ig)-like lectins, or SIGLECs (e.g., CD33 (MIM 159590)), are a family of type 1 transmembrane proteins each having a unique expression pattern, mostly in hemopoietic cells. SIGLEC8 is a member of the CD33-like subgroup of SIGLECs, which are localized to 19q13.3-q13.4 and have 2 conserved cytoplasmic tyrosine-based motifs: an immunoreceptor tyrosine-based inhibitory motif, or ITIM (see MIM 604964), and a motif homologous to one identified in signaling lymphocyte activation molecule (SLAM; MIM 603492) that mediates an association with SLAM-associated protein (SAP; MIM 300490) (summarized by Foussias et al., 2000 [PubMed 11095983]).
Form	Freeze-dried powder
Molecular Mass	Predicted Molecular Mass: 59.0kDa.
Endotoxin	<1.0EU per 1ug (determined by the LAL method)

 Tel: 1-631-559-9269 1-516-512-3133

 Email: info@creative-biomart.com  Fax: 1-631-938-8127

 45-1 Ramsey Road, Shirley, NY 11967, USA

Purity	>95%
Characteristic	The isoelectric point is 9.2.
Applications	SDS-PAGE; WB; ELISA; IP.
Stability	The thermal stability is described by the loss rate of the target protein. The loss rate was determined by accelerated thermal degradation test, that is, incubate the protein at 37°C for 48h, and no obvious degradation and precipitation were observed. (Referring from China Biological Products Standard, which was calculated by the Arrhenius equation.) The loss of this protein is less than 5% within the expiration date under appropriate storage condition.
Storage	Avoid repeated freeze/thaw cycles. Store at 2-8°C for one month. Aliquot and store at -80°C for 12 months.
Storage Buffer	Supplied as lyophilized form in 20mM Tris, 150mM NaCl, pH8.0, containing 1mM EDTA, 1mM DTT, 0.01% sarcosyl, 5% trehalose, and preservative.
Reconstitution	Reconstitute in sterile ddH2O.

GENE INFORMATION

Gene Name	SIGLEC8 sialic acid binding Ig like lectin 8 [Homo sapiens (human)]
Official Symbol	SIGLEC8
Synonyms	Fbln5; fibulin 5; A55; EVEC; DANCE; fibulin-5; FIBL-5; developmental arteries and neural crest EGF-like protein
Gene ID	27181

 Tel: 1-631-559-9269 1-516-512-3133

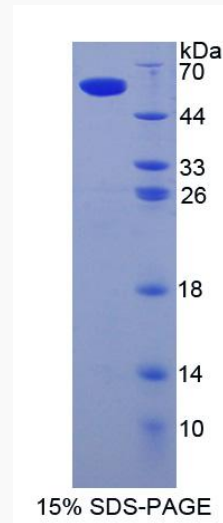
 Email: info@creative-biomart.com  Fax: 1-631-938-8127

 45-1 Ramsey Road, Shirley, NY 11967, USA

mRNA Refseq [NM_014442.2](#)

Protein Refseq [NP_055257.2](#)

UniProt ID [Q9NYZ4](#)



SDS-PAGE

Tel: 1-631-559-9269 1-516-512-3133

Email: info@creative-biomart.com Fax: 1-631-938-8127

45-1 Ramsey Road, Shirley, NY 11967, USA