

# Recombinant Human SIGLEC8 protein, His-Avi-tagged, Biotinylated

**Cat. No.** SIGLEC8-197HB    **Lot. No.** (See product label)

## SPECIFICATION

|                         |   |
|-------------------------|---|
| <b>Product Overview</b> | Biotinylated Recombinant human siglec 8 Protein is expressed from mammalian with a His Tag and Avi Tag at the C-terminal. It contains Met17-Ala363.   |
| <b>Species</b>          | Human   |
| <b>Source</b>           | HEK293  |
| <b>ProteinLength</b>    | It contains Met17-Ala363.   |
| <b>Description</b>      | Siglec-8, also known as SAF, is an approximately 75 kDa transmembrane glycoprotein in the Siglec family of sialic acid-binding immune regulatory molecules. Mature human Siglec-8 consists of a 347 amino acid (aa) extracellular domain (ECD) with three Ig-like domains. Putative adhesion molecule that mediates sialic-acid dependent binding to red blood cells. Preferentially binds to alpha-2,3-linked sialic acid. Also binds to alpha-2,6-linked sialic acid. |
| <b>Form</b>             | Supplied as 0.22um filtered solution in 20mM PBS,pH7.4.   |
| <b>Molecular Mass</b>   | The protein has a predicted MW of 40.7 kDa. Due to glycosylation, the protein migrates to 50-60KDa based on Bis-Tris PAGE result.   |
| <b>Endotoxin</b>        | Less than 0.05 EU per ug by the LAL method.   |
| <b>Purity</b>           | > 95% as determined by Tris-Bis -PAGE; > 95% as determined by HPLC  |

 Tel: 1-631-559-9269    1-516-512-3133

 Email: [info@creative-biomart.com](mailto:info@creative-biomart.com)     Fax: 1-631-938-8127

 45-1 Ramsey Road, Shirley, NY 11967, USA

|                       |   |
|-----------------------|---|
| <b>Storage</b>        | The product should be stored at -70°C. Please do not repeated freeze-thaw cycles.   |
| <b>Reconstitution</b> | It is recommended that sterile water be added to the vial to prepare a stock solution of 0.2 ug/ul. Centrifuge the vial at 4°C before opening to recover the entire contents. |
| <b>Conjugation</b>    | Biotin  |

## GENE INFORMATION

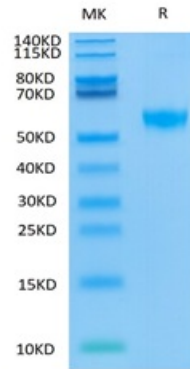
|                        |   |
|------------------------|---|
| <b>Gene Name</b>       | SIGLEC8 sialic acid binding Ig-like lectin 8 [ Homo sapiens ] |
| <b>Official Symbol</b> | SIGLEC8   |
| <b>Synonyms</b>        | SAF2; SIGLEC-8; SIGLEC8L                                      |
| <b>Gene ID</b>         | 27181   |
| <b>mRNA Refseq</b>     | NM_014442   |
| <b>Protein Refseq</b>  | NP_055257   |
| <b>MIM</b>             | 605639  |
| <b>UniProt ID</b>      | Q9NYZ4  |

 Tel: 1-631-559-9269 1-516-512-3133

 Email: [info@creative-biomart.com](mailto:info@creative-biomart.com)  Fax: 1-631-938-8127

 45-1 Ramsey Road, Shirley, NY 11967, USA

**Tris-Bis PAGE**



 Tel: 1-631-559-9269 1-516-512-3133

 Email: [info@creative-biomart.com](mailto:info@creative-biomart.com)  Fax: 1-631-938-8127

 45-1 Ramsey Road, Shirley, NY 11967, USA