

## Recombinant Human SIGLEC8 protein, His-tagged

Cat. No. SIGLEC8-772H Lot. No. (See product label)

### SPECIFICATION

|                             |  |
|-----------------------------|--|
| <b>Product Overview</b>     | Recombinant Human SIGLEC8 (Met17-Ala363) protein was fused to His-tag at C-terminus and expressed in human 293 cells (HEK293).   |
| <b>Species</b>              | Human  |
| <b>Source</b>               | HEK293   |
| <b>ProteinLength</b>        | Met17-Ala363   |
| <b>Description</b>          | <p>Siglec-8 is also known as SIGLEC8, SAF2, SIGLEC-8, SIGLEC8L and sialic acid binding Ig like lectin 8. Siglec-8 was first identified by CD33 homology screening of ESTs from a cDNA library generated from a patient diagnosed with idiopathic hypereosinophilic syndrome and was originally termed SAF-2 (sialoadhesin family 2). At the tissue level, Siglec-8 mRNA was found to be most highly expressed in lung, PBMCs, spleen, and kidney. Two splice variants of Siglec-8 exist. The initially characterized form contains 431 amino acid residues in total, subsequently, a longer form of Siglec-8, initially termed Siglec-8L. Both forms of Siglec-8 are found in eosinophils and contain a V-set domain with lectin activity and two C2-type Ig repeat domains in the extracellular region.</p> |
| <b>Predicted N Terminal</b> | Met17  |
| <b>Form</b>                 | Lyophilized from 0.22 µm filtered solution in PBS, pH7.4, 10% trehalose.   |
| <b>Molecular Mass</b>       | The protein has a calculated MW of 39.7 kDa. The protein migrates as 50-55 kDa   |

 Tel: 1-631-559-9269 1-516-512-3133

 Email: [info@creative-biomart.com](mailto:info@creative-biomart.com)  Fax: 1-631-938-8127

 45-1 Ramsey Road, Shirley, NY 11967, USA

|                       |   |
|-----------------------|---|
|                       | under reducing (R) condition (SDS-PAGE) due to glycosylation.   |
| <b>Endotoxin</b>      | Less than 1.0 EU per µg by the LAL method.  |
| <b>Purity</b>         | >95% as determined by SDS-PAGE.   |
| <b>Storage</b>        | <p>For long term storage, the product should be stored at lyophilized state at -20 centigrade or lower.</p> <p>Please avoid repeated freeze-thaw cycles.</p> <p>This product is stable after storage at:</p> <p>-20 to -70 centigrade for 12 months in lyophilized state;</p> <p>-70 centigrade for 3 months under sterile conditions after reconstitution.</p> |
| <b>Reconstitution</b> | It is recommended that sterile water be added to the vial to prepare a stock solution of 0.2 ug/ul. Centrifuge the vial at 4°C before opening to recover the entire contents.   |

## GENE INFORMATION

|                        |  |
|------------------------|--|
| <b>Gene Name</b>       | <a href="#">SIGLEC8</a>  |
| <b>Official Symbol</b> | <a href="#">SIGLEC8</a>  |
| <b>Synonyms</b>        | SIGLEC8; sialic acid binding Ig-like lectin 8; sialic acid-binding Ig-like lectin 8; MGC59785; SAF2; SIGLEC 8; SIGLEC8L; SAF-2; CDw329; sialoadhesin family member 2; SIGLEC-8 |
| <b>Gene ID</b>         | <a href="#">27181</a>  |
| <b>mRNA Refseq</b>     | <a href="#">NM_014442</a>  |
| <b>Protein Refseq</b>  | <a href="#">NP_055257</a>  |

 Tel: 1-631-559-9269 1-516-512-3133

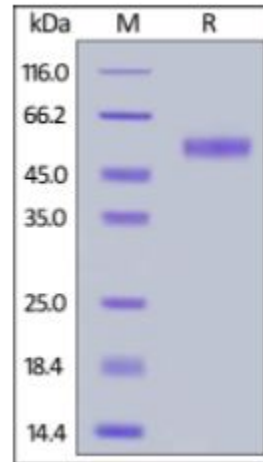
 Email: [info@creative-biomart.com](mailto:info@creative-biomart.com)  Fax: 1-631-938-8127

 45-1 Ramsey Road, Shirley, NY 11967, USA

MIM 605639

UniProt ID Q9NYZ4

**SDS-PAGE of  
SIGLEC8-772H**



Human Siglec-8, His Tag on SDS-PAGE under reducing (R) condition. The gel was stained overnight with Coomassie Blue. The purity of the protein is greater than 95%.

Tel: 1-631-559-9269 1-516-512-3133

Email: [info@creative-biomart.com](mailto:info@creative-biomart.com) Fax: 1-631-938-8127

45-1 Ramsey Road, Shirley, NY 11967, USA