

Recombinant Human SIGLEC9 Protein, His-tagged

Cat. No. SIGLEC9-051H Lot. No. (See product label)

SPECIFICATION

Product Overview	Recombinant Human SIGLEC9 Protein with His tag was expressed in E. coli.
Species	Human
Source	E.coli
Description	<p>Two families of mammalian lectin-like adhesion molecules bind glycoconjugate ligands in a sialic acid-dependent manner: the selectins and the sialoadhesins. The sialic acid-binding immunoglobulin superfamily lectins, designated siglecs or sialoadhesins, are immunoglobulin superfamily members recognizing sialylated ligands. The common sialic acids of mammalian cells are N-acetylneuraminic acid (Neu5Ac) and N-glycolylneuraminic acid (Neu5Gc). Siglec-1 mediates local cell-cell interactions in lymphoid tissues and can be detected at contact points of macrophages with other macrophages, sinus-lining cells and reticulum cells. Siglec-7, highly expressed in monocytes and resident blood cells but not in parenchymatous cells, mediates inhibition of natural killer cell cytotoxicity. Siglec-9 is closely homologous to Siglec-7. It is highly expressed in peripheral blood leukocytes (not eosinophils), liver, bone marrow, placenta and spleen. Siglec-8, a type I membrane protein, is selectively expressed on human eosinophils, basophils and mast cells, where it regulates their function and survival.</p>
Molecular Mass	~42 kDa
AA Sequence	SELDPKGQHVCVASSPSAELQCCAGWRQKDQECTIPICEGPDACQKDEVCKPGL

 Tel: 1-631-559-9269 1-516-512-3133

 Email: info@creative-biomart.com  Fax: 1-631-938-8127

 45-1 Ramsey Road, Shirley, NY 11967, USA

CRCKPGFFGAHCSSRCPGQYWGPDCRESCPCHPHGQCEPATGACQCQADRWGA
RCEFPCACGPHGRCDPATGVCHCEPGWWSSTCRRPCQCNTAAARCEQATGACV
CKPGWWGRRCSFRCNCHGSPCEQDSGRCACRPGWWGPECQQQCECVRGRCS
AASGECTCPPGFRGARCELPCPAGSHGVQCAHSCGRCKHNEPCSPDTGSCESCE
PGWNGTQCQQPCLPGTFGESCEQQCPHCRHGEACEPDTGHCQRCDPGWLGPRC
EDPCPTGTFGEDCGSTCPTCVQGSCTVTGDCVCSAGYWGPPSCNASCPAGFHGN
NCSVPCECPEGLCHPVSGSCQPGSGSRDT

Purity

Transferred into competent cells and the supernatant was purified by NI column affinity chromatography and the purity is > 85% (by SDS-PAGE).

Notes

For research use only, not for use in diagnostic procedure.

Storage

Store at 4 centigrade short term. Aliquot and store at -20 centigrade long term. Avoid freeze-thaw cycles.

Storage Buffer

PBS, 4M Urea, pH7.4

GENE INFORMATION

Gene Name

SIGLEC9 sialic acid binding Ig-like lectin 9 [Homo sapiens (human)]

Official Symbol

SIGLEC9

Synonyms

SIGLEC9; sialic acid binding Ig-like lectin 9; sialic acid-binding Ig-like lectin 9; CD329; protein FOAP-9; CDw329; FOAP-9; siglec-9; OBBP-LIKE;

Gene ID

27180

mRNA Refseq

NM_001198558

 Tel: 1-631-559-9269 1-516-512-3133

 Email: info@creative-biomart.com  Fax: 1-631-938-8127

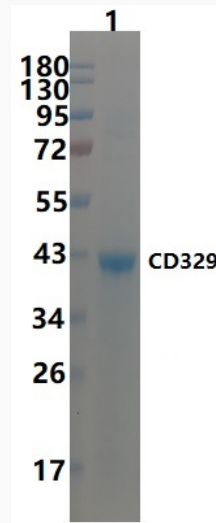
 45-1 Ramsey Road, Shirley, NY 11967, USA

Protein Refseq NP_001185487

MIM 605640

UniProt ID Q9Y336

SDS-PAGE



 Tel: 1-631-559-9269 1-516-512-3133

 Email: info@creative-biomart.com  Fax: 1-631-938-8127

 45-1 Ramsey Road, Shirley, NY 11967, USA