

Recombinant Human SIGLEC9 protein, His-Avi-tagged

Cat. No. SIGLEC9-146H Lot. No. (See product label)

SPECIFICATION

Product Overview	Recombinant human siglec 9 Protein is expressed from mammalian with a His tag and Avi Tag at the C-terminal. It contains Gln18-Gly348.
Species	Human
Source	HEK293
ProteinLength	It contains Gln18-Gly348.
Description	Sialic-acid-binding immunoglobulin-like lectin (Siglec) that plays a role in mediating cell-cell interactions and in maintaining immune cells in a resting state. They are sialoadhesin/CD169/Siglec-1, CD22/Siglec-2, CD33/Siglec-3, Myelin-Associated Glycoprotein (MAG/Siglec-4a) and Siglecs 5 to 11. To date, no Siglec has been shown to recognized any cell surface ligand other than sialic acids, suggesting that interactions with glycans containing this carbohydrate are important in mediating the biological functions of Siglecs.
Form	Supplied as 0. 22um filtered solution in PBS (pH 7. 4).
Molecular Mass	The protein has a predicted MW of 38. 9 kDa. Due to glycosylation, the protein migrates to 70-80 KDa based on Bis-Tris PAGE result
Endotoxin	Less than 0. 01 EU per ug by the LAL method.
Purity	> 95% as determined by Bis-Tris PAGE; > 95% as determined by HPLC

 Tel: 1-631-559-9269 1-516-512-3133

 Email: info@creative-biomart.com  Fax: 1-631-938-8127

 45-1 Ramsey Road, Shirley, NY 11967, USA

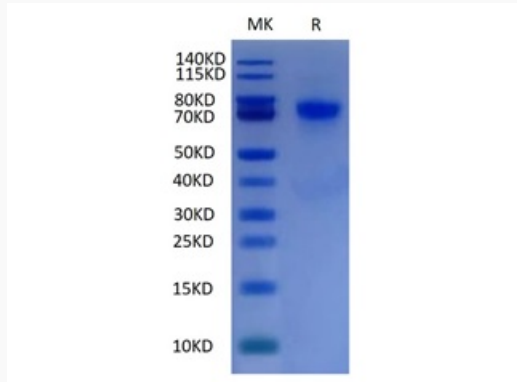
Storage	The product should be stored at -70°C. Please do not repeated freeze-thaw cycles.
Reconstitution	It is recommended that sterile water be added to the vial to prepare a stock solution of 0.2 ug/ul. Centrifuge the vial at 4°C before opening to recover the entire contents.
GENE INFORMATION	
Gene Name	SIGLEC9 sialic acid binding Ig-like lectin 9 [Homo sapiens]
Official Symbol	SIGLEC9
Synonyms	CD329; CDw329; FOAP-9; OBBP-Like; Protein FOAP-9; sialic acid binding Ig-like lectin 9; sialic acid-binding Ig-like lectin 9; Siglec9; Siglec-9
Gene ID	27180
mRNA Refseq	NM_001198558
Protein Refseq	NP_001185487
MIM	605640
UniProt ID	Q9Y336

 Tel: 1-631-559-9269 1-516-512-3133

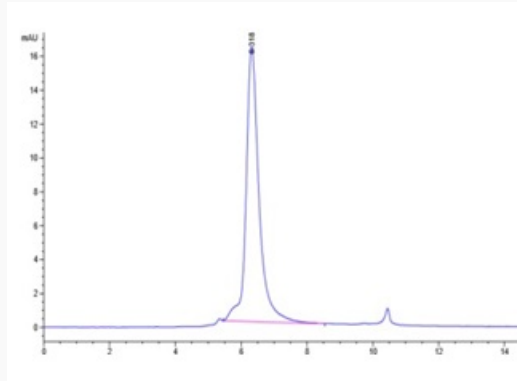
 Email: info@creative-biomart.com  Fax: 1-631-938-8127

 45-1 Ramsey Road, Shirley, NY 11967, USA

Tris-Bis PAGE



HPLC data



 Tel: 1-631-559-9269 1-516-512-3133

 Email: info@creative-biomart.com  Fax: 1-631-938-8127

 45-1 Ramsey Road, Shirley, NY 11967, USA