

Recombinant Human SIGLEC9 Protein, Myc/DDK-tagged, C13 and N15-labeled

Cat. No. SIGLEC9-6068H Lot. No. (See product label)

SPECIFICATION

Product Overview

SIGLEC9 MS Standard C13 and N15-labeled recombinant protein (NP_055256) with a C-terminal MYC/DDK tag, was expressed in HEK293 cells.

Species

Human

Source

HEK293

Description

Putative adhesion molecule that mediates sialic-acid dependent binding to cells. Preferentially binds to alpha-2,3- or alpha-2,6-linked sialic acid. The sialic acid recognition site may be masked by cis interactions with sialic acids on the same cell surface.

Molecular Mass

50.1 kDa

AA Sequence

MLLLLLPLLWGRERAEGQTSKLLTMQSSVTVQEGLCVHVPCSFYPSHGWIIYPGPV
 VHGYWFREGANTDQDAPVATNNPARAVWEETDRFHLLGDPHTENCTLSIRDARR
 SDAGRYFFRMEKGSIKWNYKHHRLSVNVTALTHRPNILIPGTLESGCPQNLTCVSPW
 ACEQGTPPMISWIGTSVSPLDPSTTRSSVLTLPQPQDHGTSLTCQVTFPGASVTTN
 KTVHLNVSYPQNLMTVFQGDGTVSTVLGNGSSLSLPEGQSLRLVCAVDAVDSNP
 PARLSLSWRGLTLCPSQPSNPGVLELPWVHLRDEAEFTCRAQNPLGSQQVYLNVS
 QSKATSGVTQGVVGGAGATALVFLSFCVIFVVVRSCRKKSARPAAGVGDGTGIEDAN
 AVRGASQGPLTEPWAEDSPPDQPPASARSSVGEGLQYASLSFQMVKPWDSR
 GQEATDTEYSEIKIHRTRTRPLEQKLISEEDLAANDILDYKDDDDKV

 Tel: 1-631-559-9269 1-516-512-3133

 Email: info@creative-biomart.com  Fax: 1-631-938-8127

 45-1 Ramsey Road, Shirley, NY 11967, USA

Purity	> 80% as determined by SDS-PAGE and Coomassie blue staining
Stability	Stable for 3 months from receipt of products under proper storage and handling conditions.
Storage	Store at -80 centigrade. Avoid repeated freeze-thaw cycles.
Concentration	50 µg/mL as determined by BCA
Storage Buffer	100 mM glycine, 25 mM Tris-HCl, pH 7.3.

GENE INFORMATION

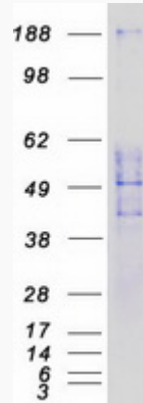
Gene Name	SIGLEC9 sialic acid binding Ig-like lectin 9 [Homo sapiens (human)]
Official Symbol	SIGLEC9
Synonyms	SIGLEC9; sialic acid binding Ig-like lectin 9; sialic acid-binding Ig-like lectin 9; CD329; protein FOAP-9; CDw329; FOAP-9; siglec-9; OBBP-LIKE;
Gene ID	27180
mRNA Refseq	NM_014441
Protein Refseq	NP_055256
MIM	605640
UniProt ID	Q9Y336

 Tel: 1-631-559-9269 1-516-512-3133

 Email: info@creative-biomart.com  Fax: 1-631-938-8127

 45-1 Ramsey Road, Shirley, NY 11967, USA

SDS-PAGE



 Tel: 1-631-559-9269 1-516-512-3133

 Email: info@creative-biomart.com  Fax: 1-631-938-8127

 45-1 Ramsey Road, Shirley, NY 11967, USA