

Recombinant Human SIGLEC9 protein, Fc-tagged

Cat. No. SIGLEC9-677H Lot. No. (See product label)

SPECIFICATION

Product Overview Recombinant Human SIGLEC9 (Gln18-Gly348) protein was fused to human IgG1 Fc tag at C-terminus and expressed in human 293 cells (HEK293).

Species Human

Source HEK293

ProteinLength Gln18-Gly348

Description siglec-9 (HGMW-approved symbol SIGLEC9) a member of the sialic acid-binding Ig-like lectin (Siglec) family, which belongs to the immunoglobulin superfamily (IgSF). SIGLEC9 shows a high degree of homology to many members of the siglec family, including siglec-7 (80%), siglec-8 (72%), siglec-5 (65%), and CD33 (64%). This high degree of homology is also conserved in the extracellular Ig-like domains. They are characterized by an N-terminal Ig-like V-type domain which mediates sialic acid binding, followed by varying numbers of Ig-like C2-type domains. Siglec-9 with a hydrophobic signal peptide, an N-terminal Ig-like V-type domain, two Ig-like C2-type domains, a transmembrane region and a cytoplasmic tail.

Predicted N Terminal Gln18

Form Lyophilized from 0.22 µm filtered solution in PBS, pH7.4, 10% trehalose.

Molecular Mass The protein has a calculated MW of 62.5 kDa. The protein migrates as 80-90 kDa under reducing (R) condition (SDS-PAGE) due to glycosylation.

 Tel: 1-631-559-9269 1-516-512-3133

 Email: info@creative-biomart.com  Fax: 1-631-938-8127

 45-1 Ramsey Road, Shirley, NY 11967, USA

Endotoxin	Less than 1.0 EU per µg by the LAL method.
Purity	>95% as determined by SDS-PAGE.
Storage	<p>For long term storage, the product should be stored at lyophilized state at -20 centigrade or lower.</p> <p>Please avoid repeated freeze-thaw cycles.</p> <p>This product is stable after storage at:</p> <p>-20 to -70 centigrade for 12 months in lyophilized state; -70 centigrade for 3 months under sterile conditions after reconstitution.</p>
Reconstitution	It is recommended that sterile water be added to the vial to prepare a stock solution of 0.2 ug/ul. Centrifuge the vial at 4°C before opening to recover the entire contents.

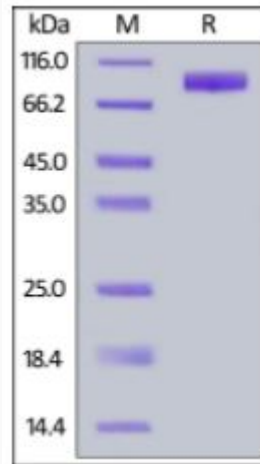
GENE INFORMATION

Gene Name	SIGLEC9
Official Symbol	SIGLEC9
Synonyms	SIGLEC9; sialic acid binding Ig-like lectin 9; sialic acid-binding Ig-like lectin 9; CD329; protein FOAP-9; CDw329; FOAP-9; siglec-9; OBBP-LIKE
Gene ID	27180
mRNA Refseq	NM_001198558
Protein Refseq	NP_001185487
MIM	605640

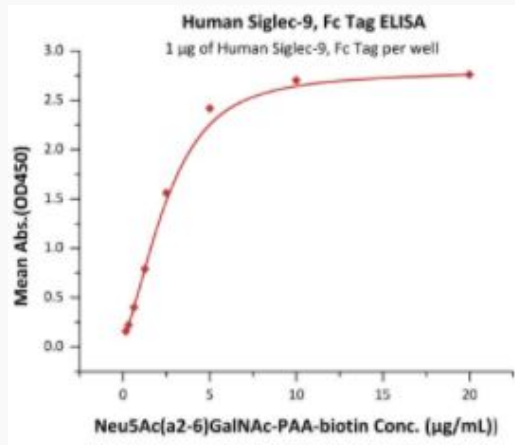
 Tel: 1-631-559-9269 1-516-512-3133

 Email: info@creative-biomart.com  Fax: 1-631-938-8127

 45-1 Ramsey Road, Shirley, NY 11967, USA

UniProt ID
Q9Y336
**SDS-PAGE of
SIGLEC9-677H**


Human Siglec-9, Fc Tag on SDS-PAGE under reducing (R) condition. The gel was stained overnight with Coomassie Blue. The purity of the protein is greater than 95%.

**Bioactivity-ELISA of
SIGLEC9-677H**


Immobilized Human Siglec-9, Fc Tag at 10 µg/mL (100 µL/well) on Diamond Protein

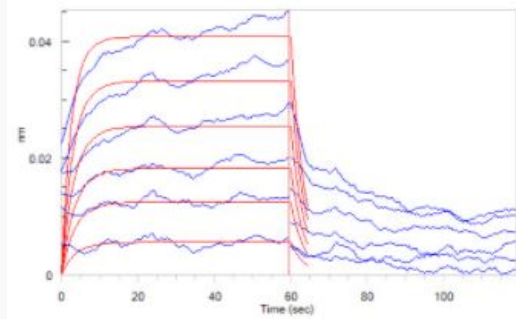
Tel: 1-631-559-9269 1-516-512-3133

Email: info@creative-biomart.com Fax: 1-631-938-8127

45-1 Ramsey Road, Shirley, NY 11967, USA

A Protein, His Tag precoated (0.5 $\mu\text{g}/\text{well}$) plate, can bind Neu5Ac(a2-6)GalNAc-PAA-biotin with a linear range of 0.156-2.5 $\mu\text{g}/\text{mL}$ (QC tested).


Bioactivity-BLI



Loaded Human Siglec-9, Fc Tag on ProteinA Biosensor, can bind Neu5Ac(a2-6)GalNAc-PAA-biotin with an affinity constant of 0.85 μM as determined in BLI assay (ForteBio Octet Red96e) (Routinely tested).

 Tel: 1-631-559-9269 1-516-512-3133

 Email: info@creative-biomart.com  Fax: 1-631-938-8127

 45-1 Ramsey Road, Shirley, NY 11967, USA