

# Recombinant Full Length Human SIGLEC9 Protein, C-Flag-tagged

**Cat. No.** SIGLEC9-963HFL    **Lot. No.** (See product label)

## SPECIFICATION

|                         |   |
|-------------------------|---|
| <b>Product Overview</b> | Recombinant Full Length Human SIGLEC9 Protein, fused to Flag-tag at C-terminus, was expressed in Mammalian cells.   |
| <b>Species</b>          | Human   |
| <b>Source</b>           | Mammalian Cells   |
| <b>Description</b>      | Predicted to enable monosaccharide binding activity and sialic acid binding activity. Predicted to be involved in cell adhesion. Predicted to act upstream of or within negative regulation of inflammatory response and negative regulation of phagocytosis, engulfment. Predicted to be located in external side of plasma membrane. Predicted to be active in plasma membrane.   |
| <b>Form</b>             | 25 mM Tris HCl, pH 7.3, 100 mM glycine, 10% glycerol.   |
| <b>Molecular Mass</b>   | 49.9 kDa  |
| <b>AA Sequence</b>      | MLLLLLPLLWGRERAEGQTSKLLTMQSSVTVQEGLCVHVPCSFSYPSHGWIYPPGPV<br>VHGYWFREGANTDQ DAPVATNNPARAVWEETRDRFHLLGDPHTENCTLSIRDARR<br>SDAGRYFFRMEKGSIKWNYKHHRLSVNVT ALTHRPNILIPGTLESGCPQNLTCSVP<br>WACEQGTPPMISWIGTSVSPLDPSTTRSSVLTLIPQPQDHGTS LTCQVTFPGASVTT<br>NKTVHLNVSYPQNLMTVFQGDGTSTVLGNGSSLSLPEGQSLRLVCAVDAVDSN<br>PPARLSLSWRGLTLCPSQPSNPGVLELPWVHLRDEAEFTCRAQNPLGSQQVYLN<br>SLQSKATSGVTQGVV GGAGATALVFLSFCVIFVVVRSCRKKSARPAAGVGDGIED |

 Tel: 1-631-559-9269    1-516-512-3133

 Email: [info@creative-biomart.com](mailto:info@creative-biomart.com)     Fax: 1-631-938-8127

 45-1 Ramsey Road, Shirley, NY 11967, USA

ANAVRGSASQGPLTEPWAEDSPPDQPPPA  
 SARSSVGEGELQYASLSFQMVKPWDSRGQEATDTEYSEIKIHRTRTRPLEQKLISEE  
 DLAANDILDYKDDDDKV

**Purity** > 80% as determined by SDS-PAGE and Coomassie blue staining.

**Stability** Stable for 12 months from the date of receipt of the product under proper storage and handling conditions. Avoid repeated freeze-thaw cycles.

**Storage** Store at -80 centigrade.

**Concentration** >50 ug/mL as determined by microplate BCA method.

**Preparation** Recombinant protein was captured through anti-DDK affinity column followed by conventional chromatography steps.

**Protein Families** Druggable Genome, Transmembrane

**Full Length** Full L.

## GENE INFORMATION

**Gene Name** [SIGLEC9 sialic acid binding Ig like lectin 9 \[ Homo sapiens \(human\) \]](#)

**Official Symbol** [SIGLEC9](#)

**Synonyms** CD329; CDw329; FOAP-9; siglec-9; OBBP-LIKE

**Gene ID** [27180](#)

**mRNA Refseq** [NM\\_014441.3](#)

 Tel: 1-631-559-9269 1-516-512-3133

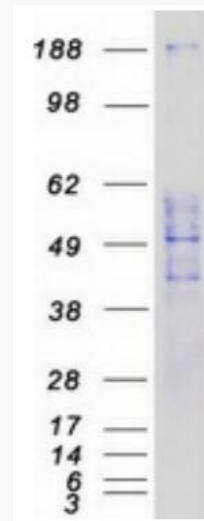
 Email: [info@creative-biomart.com](mailto:info@creative-biomart.com)  Fax: 1-631-938-8127

 45-1 Ramsey Road, Shirley, NY 11967, USA

**Protein Refseq** NP\_055256.1

**MIM** 605640

**UniProt ID** Q9Y336



Coomassie blue staining of purified SIGLEC9 protein.

 Tel: 1-631-559-9269 1-516-512-3133

 Email: [info@creative-biomart.com](mailto:info@creative-biomart.com)  Fax: 1-631-938-8127

 45-1 Ramsey Road, Shirley, NY 11967, USA