

## Recombinant Full Length Human SIL1 Protein, Flag tagged

Cat. No. SIL1-001HFL Lot. No. (See product label)

### SPECIFICATION

<b>Product Overview</b>	Recombinant protein of human SIL1 homolog, endoplasmic reticulum chaperone ( <i>S. cerevisiae</i> ) (SIL1), transcript variant 1 with Flag tag was expressed in HEK293.
<b>Species</b>	Human
<b>Source</b>	HEK293T
<b>Description</b>	This gene encodes a resident endoplasmic reticulum (ER), N-linked glycoprotein with an N-terminal ER targeting sequence, 2 putative N-glycosylation sites, and a C-terminal ER retention signal. This protein functions as a nucleotide exchange factor for another unfolded protein response protein. Mutations in this gene have been associated with Marinesco-Sjogren syndrome. Alternate transcriptional splice variants have been characterized.
<b>Form</b>	25 mM Tris-HCl, 100 mM glycine, pH 7.3, 10% glycerol
<b>Molecular Mass</b>	48.8 kDa
<b>Purity</b>	> 80% as determined by SDS-PAGE and Coomassie blue staining
<b>Notes</b>	For testing in cell culture applications, please filter before use. Note that you may experience some loss of protein during the filtration process.
<b>Storage</b>	Store at -80 centigrade. Stable for 12 months from the date of receipt of the product under proper storage and handling conditions. Avoid repeated freeze-thaw cycles.

 Tel: 1-631-559-9269 1-516-512-3133

 Email: [info@creative-biomart.com](mailto:info@creative-biomart.com)  Fax: 1-631-938-8127

 45-1 Ramsey Road, Shirley, NY 11967, USA

**Concentration** > 0.05 µg/µL as determined by microplate BCA method

## GENE INFORMATION

<b>Gene Name</b>	SIL1 SIL1 homolog, endoplasmic reticulum chaperone ( <i>S. cerevisiae</i> ) [ Homo sapiens (human) ]
<b>Official Symbol</b>	SIL1
<b>Synonyms</b>	SIL1; SIL1 homolog, endoplasmic reticulum chaperone ( <i>S. cerevisiae</i> ); Marinesco Sjogren syndrome , MSS; nucleotide exchange factor SIL1; BAP; ULG5; BiP-associated protein; MSS
<b>Gene ID</b>	64374
<b>mRNA Refseq</b>	NM_001037633
<b>Protein Refseq</b>	NP_001032722
<b>MIM</b>	608005
<b>UniProt ID</b>	Q9H173

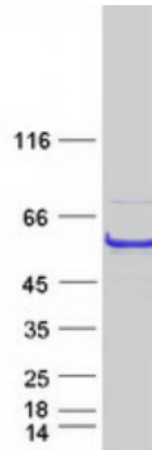
 Tel: 1-631-559-9269 1-516-512-3133

 Email: [info@creative-biomart.com](mailto:info@creative-biomart.com)  Fax: 1-631-938-8127

 45-1 Ramsey Road, Shirley, NY 11967, USA



SDS-PAGE



Tel: 1-631-559-9269 1-516-512-3133

Email: [info@creative-biomart.com](mailto:info@creative-biomart.com) Fax: 1-631-938-8127

45-1 Ramsey Road, Shirley, NY 11967, USA