

# Recombinant Human SIL1 Protein, Myc/DDK-tagged, C13 and N15-labeled

**Cat. No.** SIL1-786H    **Lot. No.** (See product label)

## SPECIFICATION

<b>Product Overview</b>	SIL1 MS Standard C13 and N15-labeled recombinant protein (NP_071909) with a C-terminal MYC/DDK tag, was expressed in HEK293 cells.
<b>Species</b>	Human
<b>Source</b>	HEK293
<b>Description</b>	This gene encodes a resident endoplasmic reticulum (ER), N-linked glycoprotein with an N-terminal ER targeting sequence, 2 putative N-glycosylation sites, and a C-terminal ER retention signal. This protein functions as a nucleotide exchange factor for another unfolded protein response protein. Mutations in this gene have been associated with Marinesco-Sjogren syndrome. Alternate transcriptional splice variants have been characterized.
<b>Molecular Mass</b>	48.8 kDa
<b>AA Sequence</b>	<pre> MAPQSLPSSRMAPLGMLLGLLMAACFTFCLSHQNLKEFALTNPESSTKETERKET KAEELDAEVLEVFHPTHEWQALQPGQAVPAGSHVRLNLQTGEREAKLQYEDKFR NNLKGKRLDINTNTYTSQDLKSALAKFKEGAEMESSKEDKARQAEVKRLFRPIEELK KDFDELNVVIETDMQIMVRLINKFNSSSSSLEEKIAALFDLEYVYVHQMDNAQDLLSFG GLQVVINGLNSTEPLVKEYAAFVLGAAFSSNPKVQVEAIEGGALQKLLVILATEQPLT AKKKVLFALCSLLRHFPYAQRQFLKLGGLQVLRRTLQVEKGTAVLAVRVVTLTYDLVTE KMFEEEEAELTQEMSPEKLQQYRQVHLLPGLWEQGWCEITAHLLALPEHDAREKVL </pre>

 Tel: 1-631-559-9269    1-516-512-3133

 Email: [info@creative-biomart.com](mailto:info@creative-biomart.com)     Fax: 1-631-938-8127

 45-1 Ramsey Road, Shirley, NY 11967, USA

QTLGVLLTTCRDRYRQDPQLGRTLASLQAEYQVLASLELQDGEDEGYFQELLGSVN  
 SLLKELRTRTRPLEQKLISEEDLAANDILDYKDDDDKV

**Purity** > 80% as determined by SDS-PAGE and Coomassie blue staining

**Stability** Stable for 3 months from receipt of products under proper storage and handling conditions.

**Storage** Store at -80 centigrade. Avoid repeated freeze-thaw cycles.

**Concentration** 50 µg/mL as determined by BCA

**Storage Buffer** 100 mM glycine, 25 mM Tris-HCl, pH 7.3.

## GENE INFORMATION

**Gene Name** [SIL1](#) [SIL1 nucleotide exchange factor \[ Homo sapiens \(human\) \]](#)

**Official Symbol** [SIL1](#)

**Synonyms** SIL1; SIL1 homolog, endoplasmic reticulum chaperone (*S. cerevisiae*); Marinesco Sjogren syndrome, MSS; nucleotide exchange factor SIL1; BAP; ULG5; BiP-associated protein; MSS;

**Gene ID** [64374](#)

**mRNA Refseq** [NM\\_022464](#)

**Protein Refseq** [NP\\_071909](#)

**MIM** [608005](#)

 Tel: 1-631-559-9269 1-516-512-3133

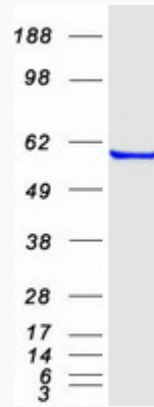
 Email: [info@creative-biomart.com](mailto:info@creative-biomart.com)  Fax: 1-631-938-8127

 45-1 Ramsey Road, Shirley, NY 11967, USA

UniProt ID

Q9H173

SDS-PAGE



 Tel: 1-631-559-9269 1-516-512-3133

 Email: [info@creative-biomart.com](mailto:info@creative-biomart.com)  Fax: 1-631-938-8127

 45-1 Ramsey Road, Shirley, NY 11967, USA