

Recombinant Bovine SIRPA Protein, His-tagged

Cat. No. SIPRA-132B Lot. No. (See product label)

SPECIFICATION

Product Overview	Recombinant protein of the extracellular domain(Asp31 - Asn368) of Bos taurus signal regulatory protein alpha(SIRPA)(NM_175788), with a polyhistidine tag, was expressed in mammalian cells.
Species	Bovine
Source	Mammalian Cells
ProteinLength	Asp31 - Asn368
Form	Purified protein formulated in a sterile solution of PBS buffer, pH7.2, without any preservatives
Molecular Mass	37.7 kDa
Endotoxin	Endotoxin level is < 0.1 ng/g of protein (<1EU /g)
Purity	>90% by SDS-PAGE gel and Coomassie Blue staining
Applications	Antigens, Western, ELISA and other in vitro binding or in vivo functional assays, and protein-protein interaction studies.

GENE INFORMATION

Gene Name SIRPA signal regulatory protein alpha [Bos taurus (cattle)]

 Tel: 1-631-559-9269 1-516-512-3133

 Email: info@creative-biomart.com  Fax: 1-631-938-8127

 45-1 Ramsey Road, Shirley, NY 11967, USA

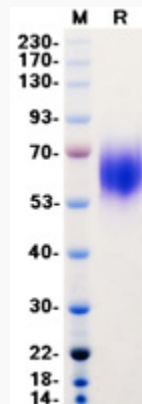
Official Symbol SIRPA

Gene ID 327666

mRNA Refseq NM_175788

Protein Refseq NP_786982

UniProt ID O46631



SDS-PAGE

 Tel: 1-631-559-9269 1-516-512-3133

 Email: info@creative-biomart.com  Fax: 1-631-938-8127

 45-1 Ramsey Road, Shirley, NY 11967, USA