

## Recombinant Bovine SIRPA Protein, Fc-tagged

**Cat. No.** SIPRA-133B    **Lot. No.** (See product label)

### SPECIFICATION

<b>Product Overview</b>	Recombinant protein of the extracellular domain(Asp31 - Asn368) of <i>Bos taurus</i> signal regulatory protein alpha (SIRPA)(NM_175788), with a Fc tag, was expressed in mammalian cells.
<b>Species</b>	Bovine
<b>Source</b>	Mammalian Cells
<b>ProteinLength</b>	Asp31 - Asn368
<b>Form</b>	Purified protein formulated in a sterile solution of PBS buffer, pH7.2, without any preservatives
<b>Molecular Mass</b>	63.6 kDa
<b>Endotoxin</b>	Endotoxin level is < 0.1 ng/g of protein (<1EU /g)
<b>Purity</b>	>90% by SDS-PAGE gel and Coomassie Blue staining
<b>Applications</b>	Antigens, Western, ELISA and other in vitro binding or in vivo functional assays, and protein-protein interaction studies.

### GENE INFORMATION

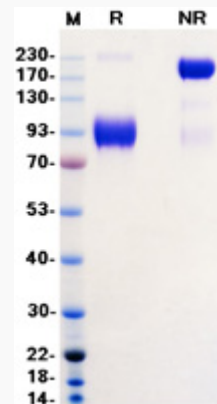
**Gene Name**                      SIRPA signal regulatory protein alpha [ *Bos taurus* (cattle) ]

 Tel: 1-631-559-9269    1-516-512-3133

 Email: [info@creative-biomart.com](mailto:info@creative-biomart.com)     Fax: 1-631-938-8127

 45-1 Ramsey Road, Shirley, NY 11967, USA

Official Symbol	SIRPA
Gene ID	327666
mRNA Refseq	NM_175788
Protein Refseq	NP_786982
UniProt ID	O46631



SDS-PAGE

Tel: 1-631-559-9269 1-516-512-3133

Email: [info@creative-biomart.com](mailto:info@creative-biomart.com) Fax: 1-631-938-8127

45-1 Ramsey Road, Shirley, NY 11967, USA