

## Recombinant Human SIRPA Protein (Glu31-Arg370), N-His tagged

Cat. No. SIRPA-0764H Lot. No. (See product label)

### SPECIFICATION

<b>Product Overview</b>	Recombinant Human CD172a/SIRPA (Glu31-Arg370) fused with the N-His tag was expressed in E. coli.
<b>Species</b>	Human
<b>Source</b>	E.coli
<b>ProteinLength</b>	Glu31-Arg370
<b>Form</b>	Lyophilized powder/frozen liquid
<b>Molecular Mass</b>	39.62 kDa
<b>Purity</b>	>90% as determined by SDS-PAGE.
<b>Notes</b>	For research use only.
<b>Storage</b>	Use a manual defrost freezer and avoid repeated freeze thaw cycles. Store at 2 to 8 centigrade for one week. Store at -20 to -80 centigrade for twelve months from the date of receipt.
<b>Storage Buffer</b>	0.01M PBS, pH 7.4, 0.02% NLS
<b>Reconstitution</b>	Reconstitute in sterile water for a stock solution.

 Tel: 1-631-559-9269 1-516-512-3133

 Email: [info@creative-biomart.com](mailto:info@creative-biomart.com)  Fax: 1-631-938-8127

 45-1 Ramsey Road, Shirley, NY 11967, USA

**Shipping** They are shipped out with dry ice/blue ice unless customers require otherwise.

## GENE INFORMATION

**Gene Name** SIRPA signal-regulatory protein alpha [ Homo sapiens (human) ]

**Official Symbol** SIRPA

**Synonyms** SIRPA; signal-regulatory protein alpha; protein tyrosine phosphatase, non receptor type substrate 1, PTPNS1; tyrosine-protein phosphatase non-receptor type substrate 1; BIT; CD172a; MFR; MYD 1; P84; SHPS 1; SHPS1; SIRP; SIRP ALPHA 1; SIRPalpha; SIRPalpha2; myd-1 antigen; inhibitory receptor SHPS-1; macrophage fusion receptor; CD172 antigen-like family member A; tyrosine phosphatase SHP substrate 1; brain-immunoglobulin-like molecule with tyrosine-based activation motifs; MYD-1; CD172A; PTPNS1;

**Gene ID** 140885

**mRNA Refseq** NM\_001040022

**Protein Refseq** NP\_001035111

**MIM** 602461

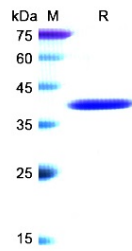
**UniProt ID** P78324

 Tel: 1-631-559-9269 1-516-512-3133

 Email: [info@creative-biomart.com](mailto:info@creative-biomart.com)  Fax: 1-631-938-8127

 45-1 Ramsey Road, Shirley, NY 11967, USA

**SDS-PAGE**



 Tel: 1-631-559-9269 1-516-512-3133

 Email: [info@creative-biomart.com](mailto:info@creative-biomart.com)  Fax: 1-631-938-8127

 45-1 Ramsey Road, Shirley, NY 11967, USA