

Active Recombinant Human SIRPA protein, His-tagged

Cat. No. SIRPA-1276H Lot. No. (See product label)

SPECIFICATION

Product Overview	Recombinant Human SIRP-alpha/CD172a Protein is produced by HEK293 expression system. The target protein is expressed with sequence (Glu31-Arg370) of human SIRP alpha/CD172a (Accession #NP_542970) fused with a 6xHis tag at the C-terminus.
Species	Human
Source	HEK293
ProteinLength	Glu31-Arg370
Form	Lyophilized from a 0.22 µm filtered solution of PBS, pH 7.4.
Bio-activity	Measured by its binding ability in a functional ELISA. Immobilized Recombinant Human SIRPA at 5 µg/mL (100 µL/well) can bind Recombinant Human CD47 with a linear range of 0.1-0.4 µg/mL.
Molecular Mass	45-57 kDa
Endotoxin	< 0.1 EU/µg of the protein by LAL method.
Purity	> 97% by SDS-PAGE.
Storage	Store the lyophilized protein at -20°C to -80 °C for long term. After reconstitution, the protein solution is stable at -20 °C for 3 months, at 2-8 °C for

 Tel: 1-631-559-9269 1-516-512-3133

 Email: info@creative-biomart.com  Fax: 1-631-938-8127

 45-1 Ramsey Road, Shirley, NY 11967, USA

up to 1 week.

Reconstitution Reconstitute to a concentration of 0.1-0.5 mg/mL in sterile distilled water.

GENE INFORMATION

Gene Name [SIRPA signal-regulatory protein alpha \[Homo sapiens \]](#)

Official Symbol [SIRPA](#)

Synonyms

SIRPA; signal-regulatory protein alpha; protein tyrosine phosphatase, non receptor type substrate 1 , PTPNS1; tyrosine-protein phosphatase non-receptor type substrate 1; BIT; CD172a; MFR; MYD 1; P84; SHPS 1; SHPS1; SIRP; SIRP ALPHA 1; SIRPalpha; SIRPalpha2; myd-1 antigen; inhibitory receptor SHPS-1; macrophage fusion receptor; CD172 antigen-like family member A; tyrosine phosphatase SHP substrate 1; brain-immunoglobulin-like molecule with tyrosine-based activation motifs; MYD-1; CD172A; PTPNS1;

Gene ID [140885](#)

mRNA Refseq [NM_001040022](#)

Protein Refseq [NP_001035111](#)

MIM [602461](#)

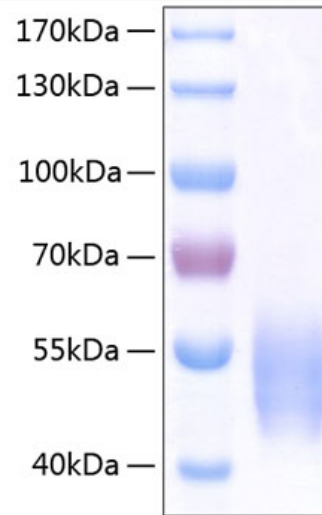
UniProt ID [P78324](#)

 Tel: 1-631-559-9269 1-516-512-3133

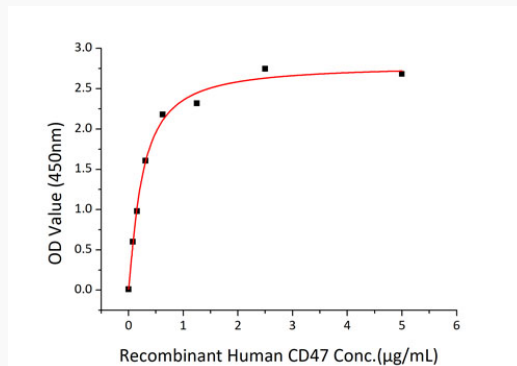
 Email: info@creative-biomart.com  Fax: 1-631-938-8127

 45-1 Ramsey Road, Shirley, NY 11967, USA

SDS-PAGE



Activity



 Tel: 1-631-559-9269 1-516-512-3133

 Email: info@creative-biomart.com  Fax: 1-631-938-8127

 45-1 Ramsey Road, Shirley, NY 11967, USA