

## Recombinant Human SIRPA protein, His-Avi-tagged

Cat. No. SIRPA-2434H Lot. No. (See product label)

### SPECIFICATION

|                         |  |
|-------------------------|--|
| <b>Product Overview</b> | Recombinant Human SIRPA protein(P78324 variant 4)(Glu31-Arg370(E33G, L44S, T50S, T52I, R54H)), fused with C-terminal His and Avi tag, was expressed in HEK293. |
| <b>Species</b>          | Human  |
| <b>Source</b>           | HEK293   |
| <b>ProteinLength</b>    | Glu31-Arg370(E33G, L44S, T50S, T52I, R54H)   |
| <b>Tag</b>              | C-His-Avi  |
| <b>Form</b>             | Lyophilized from 0.22µm filtered solution in PBS (pH 7.4). Normally 5% trehalose is added as protectant before lyophilization.                                 |
| <b>Bio-activity</b>     | Immobilized Human SIRP alpha V4, His Tag at 1ug/ml (100ul/Well). Dose response curve for Human CD47, hFc Tag with the EC50 of 44.3ng/ml determined by ELISA.   |
| <b>Molecular Mass</b>   | The protein has a predicted MW of 39.8 kDa. Due to glycosylation, the protein migrates to 50-70 kDa based on Tris-Bis PAGE result.                             |
| <b>Endotoxin</b>        | Less than 1EU per µg by the LAL method.  |
| <b>Purity</b>           | > 95% as determined by Tris-Bis PAGE;> 95% as determined by HPLC   |

 Tel: 1-631-559-9269 1-516-512-3133

 Email: [info@creative-biomart.com](mailto:info@creative-biomart.com)  Fax: 1-631-938-8127

 45-1 Ramsey Road, Shirley, NY 11967, USA

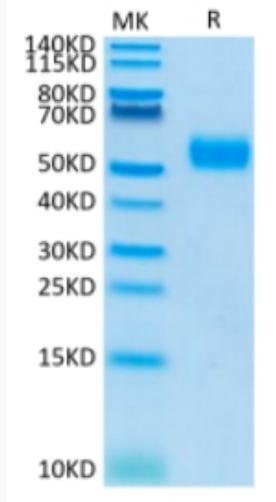
|                         |   |
|-------------------------|---|
| <b>Storage</b>          | Reconstituted protein stable at -80°C for 12 months, 4°C for 1 week. Use a manual defrost freezer and avoid repeated freeze-thaw cycles.  |
| <b>Reconstitution</b>   | Centrifuge tubes before opening. Reconstituting to a concentration more than 100 µg/ml is recommended. Dissolve the lyophilized protein in distilled water.   |
| <b>GENE INFORMATION</b> |   |
| <b>Gene Name</b>        | <a href="#">SIRPA signal-regulatory protein alpha [ Homo sapiens ]</a>  |
| <b>Official Symbol</b>  | <a href="#">SIRPA</a>   |
| <b>Synonyms</b>         | SIRPA; signal-regulatory protein alpha; protein tyrosine phosphatase, non receptor type substrate 1 , PTPNS1; tyrosine-protein phosphatase non-receptor type substrate 1; BIT; CD172a; MFR; MYD 1; P84; SHPS 1; SHPS1; SIRP; SIRP ALPHA 1; SIRPalpha; SIRPalpha2; myd-1 antigen; inhibitory receptor SHPS-1; macrophage fusion receptor; CD172 antigen-like family member A; tyrosine phosphatase SHP substrate 1; brain-immunoglobulin-like molecule with tyrosine-based activation motifs; MYD-1; CD172A; PTPNS1; |
| <b>Gene ID</b>          | <a href="#">140885</a>  |
| <b>mRNA Refseq</b>      | <a href="#">NM_001040022</a>  |
| <b>Protein Refseq</b>   | <a href="#">NP_001035111</a>  |
| <b>MIM</b>              | <a href="#">602461</a>  |
| <b>UniProt ID</b>       | <a href="#">P78324</a>  |

 Tel: 1-631-559-9269 1-516-512-3133

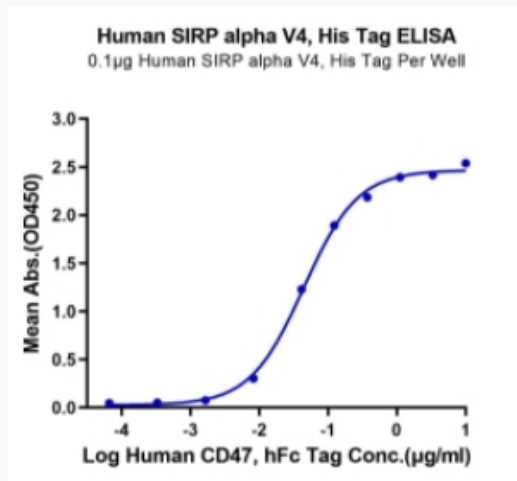
 Email: [info@creative-biomart.com](mailto:info@creative-biomart.com)  Fax: 1-631-938-8127

 45-1 Ramsey Road, Shirley, NY 11967, USA

**Tris-Bis PAGE**



**ELISA Data**



 Tel: 1-631-559-9269 1-516-512-3133

 Email: [info@creative-biomart.com](mailto:info@creative-biomart.com)  Fax: 1-631-938-8127

 45-1 Ramsey Road, Shirley, NY 11967, USA