

Recombinant Human SIRPA protein, hFc-tagged

Cat. No. SIRPA-520H Lot. No. (See product label)

SPECIFICATION

Product Overview	Recombinant Human SIRPA protein(P78324-1)(Glu31-Arg370), fused with C-terminal hFc tag, was expressed in HEK293.
Species	Human
Source	HEK293
ProteinLength	Glu31-Arg370
Tag	C-hFc
Form	Lyophilized from 0.22µm filtered solution in PBS (pH 7.4). Normally 5% trehalose is added as protectant before lyophilization.
Bio-activity	Immobilized Human CD47, His Tag at 2µg/ml (100µl/well) on the plate. Dose response curve for Human SIRP alpha, hFc Tag with the EC50 of 82.1ng/ml determined by ELISA.
Molecular Mass	The protein has a predicted MW of 64.1 kDa. Due to glycosylation, the protein migrates to 78-90 kDa based on Tris-Bis PAGE result.
Endotoxin	Less than 1EU per µg by the LAL method.
Purity	> 95% as determined by Tris-Bis PAGE; > 95% as determined by SEC-HPLC

 Tel: 1-631-559-9269 1-516-512-3133

 Email: info@creative-biomart.com  Fax: 1-631-938-8127

 45-1 Ramsey Road, Shirley, NY 11967, USA

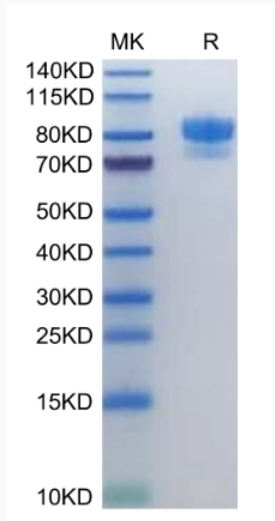
Storage	Reconstituted protein stable at -80°C for 12 months, 4°C for 1 week. Use a manual defrost freezer and avoid repeated freeze-thaw cycles.
Reconstitution	Centrifuge tubes before opening. Reconstituting to a concentration more than 100 µg/ml is recommended. Dissolve the lyophilized protein in distilled water.
GENE INFORMATION	
Gene Name	SIRPA signal-regulatory protein alpha [Homo sapiens]
Official Symbol	SIRPA
Synonyms	SIRPA; signal-regulatory protein alpha; protein tyrosine phosphatase, non receptor type substrate 1 , PTPNS1; tyrosine-protein phosphatase non-receptor type substrate 1; BIT; CD172a; MFR; MYD 1; P84; SHPS 1; SHPS1; SIRP; SIRP ALPHA 1; SIRPalpha; SIRPalpha2; myd-1 antigen; inhibitory receptor SHPS-1; macrophage fusion receptor; CD172 antigen-like family member A; tyrosine phosphatase SHP substrate 1; brain-immunoglobulin-like molecule with tyrosine-based activation motifs; MYD-1; CD172A; PTPNS1;
Gene ID	140885
mRNA Refseq	NM_001040022
Protein Refseq	NP_001035111
MIM	602461
UniProt ID	P78324

 Tel: 1-631-559-9269 1-516-512-3133

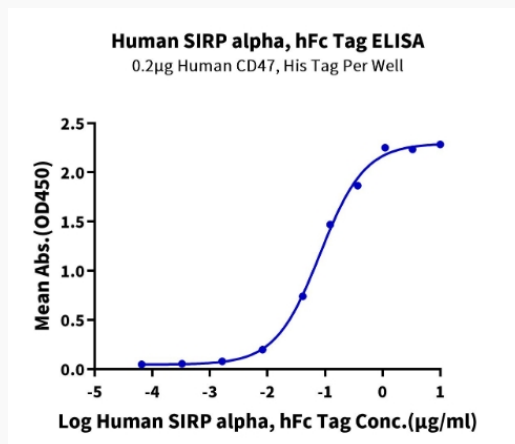
 Email: info@creative-biomart.com  Fax: 1-631-938-8127

 45-1 Ramsey Road, Shirley, NY 11967, USA

Tris-Bis PAGE



ELISA Data



 Tel: 1-631-559-9269 1-516-512-3133

 Email: info@creative-biomart.com  Fax: 1-631-938-8127

 45-1 Ramsey Road, Shirley, NY 11967, USA