

Recombinant Human SIRPA protein, His-Avi-tagged

Cat. No. SIRPA-8966H Lot. No. (See product label)

SPECIFICATION

Product Overview	Recombinant Human SIRPA protein(ATD50864.1)(Glu31-Arg369(S44L, S50T, I52T, H54R, V57A)), fused with C-terminal His and Avi tag, was expressed in HEK293.
Species	Human
Source	HEK293
ProteinLength	Glu31-Arg369(S44L, S50T, I52T, H54R, V57A)
Tag	C-His-Avi
Form	Lyophilized from 0.22µm filtered solution in PBS (pH 7.4). Normally 5% trehalose is added as protectant before lyophilization.
Bio-activity	Immobilized Human SIRP alpha V8, His Tag at 2ug/ml (100ul/Well) on the plate. Dose response curve for Human CD47, hFc Tag with the EC50 of 5.6ng/ml determined by ELISA.
Molecular Mass	The protein has a predicted MW of 40.1 kDa. Due to glycosylation, the protein migrates to 52-68 kDa based on Tris-Bis PAGE result.
Endotoxin	Less than 1EU per µg by the LAL method.
Purity	> 95% as determined by Tris-Bis PAGE;> 95% as determined by HPLC

 Tel: 1-631-559-9269 1-516-512-3133

 Email: info@creative-biomart.com  Fax: 1-631-938-8127

 45-1 Ramsey Road, Shirley, NY 11967, USA

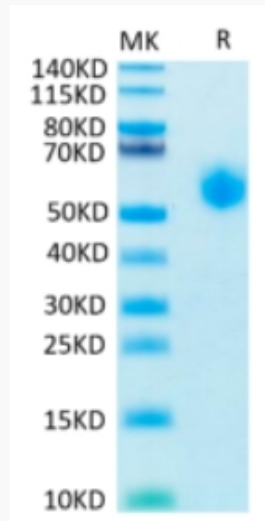
Storage	Reconstituted protein stable at -80°C for 12 months, 4°C for 1 week. Use a manual defrost freezer and avoid repeated freeze-thaw cycles.
Reconstitution	Centrifuge tubes before opening. Reconstituting to a concentration more than 100 µg/ml is recommended. Dissolve the lyophilized protein in distilled water.
GENE INFORMATION	
Gene Name	SIRPA signal-regulatory protein alpha [Homo sapiens]
Official Symbol	SIRPA
Synonyms	SIRPA; signal-regulatory protein alpha; protein tyrosine phosphatase, non receptor type substrate 1 , PTPNS1; tyrosine-protein phosphatase non-receptor type substrate 1; BIT; CD172a; MFR; MYD 1; P84; SHPS 1; SHPS1; SIRP; SIRP ALPHA 1; SIRPalpha; SIRPalpha2; myd-1 antigen; inhibitory receptor SHPS-1; macrophage fusion receptor; CD172 antigen-like family member A; tyrosine phosphatase SHP substrate 1; brain-immunoglobulin-like molecule with tyrosine-based activation motifs; MYD-1; CD172A; PTPNS1;
Gene ID	140885
mRNA Refseq	NM_001040022
Protein Refseq	NP_001035111
MIM	602461
UniProt ID	P78324

 Tel: 1-631-559-9269 1-516-512-3133

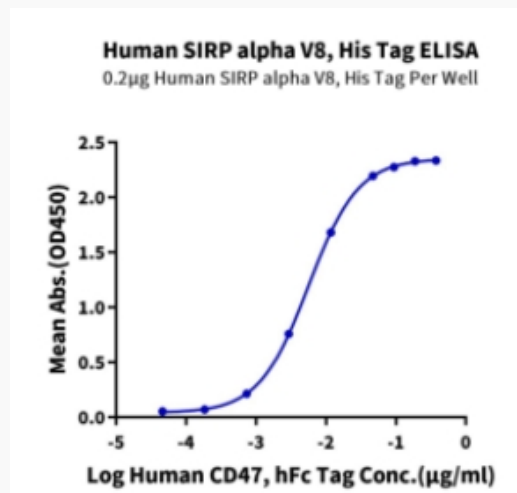
 Email: info@creative-biomart.com  Fax: 1-631-938-8127

 45-1 Ramsey Road, Shirley, NY 11967, USA

Tris-Bis PAGE



ELISA Data



 Tel: 1-631-559-9269 1-516-512-3133

 Email: info@creative-biomart.com  Fax: 1-631-938-8127

 45-1 Ramsey Road, Shirley, NY 11967, USA