

Recombinant Mouse SIRPA protein, Fc-tagged

Cat. No. SIRPA-936M Lot. No. (See product label)

SPECIFICATION

Product Overview Recombinant Mouse SIRPA (Lys32-Asn373) protein was fused to human IgG1 Fc tag at C-terminus and expressed in human 293 cells (HEK293).

Species Mouse

Source HEK293

ProteinLength Lys32-Asn373

Description

Tyrosine-protein phosphatase non-receptor type substrate 1 (SHPS1) is also known as CD172 antigen-like family member A (CD172a), Macrophage fusion receptor, MyD-1 antigen, Signal-regulatory protein alpha (SIRPA or SIRP alpha) or p84, is a member of the SIRP family, and also belongs to the immunoglobulin superfamily. SIRP alpha is Ubiquitous and highly expressed in brain. SIRPA/CD172a is immunoglobulin-like cell surface receptor for CD47 and acts as docking protein and induces translocation of PTPN6, PTPN11 and other binding partners from the cytosol to the plasma membrane. SIRPA/SHPS-1 supports adhesion of cerebellar neurons, neurite outgrowth and glial cell attachment and may play a key role in intracellular signaling during synaptogenesis and in synaptic function By similarity. SIRPA/MyD1 involved in the negative regulation of receptor tyrosine kinase-coupled cellular responses induced by cell adhesion, growth factors or insulin and mediates negative regulation of phagocytosis, mast cell activation and dendritic cell activation. CD47 binding prevents maturation of immature dendritic cells and inhibits cytokine production by mature dendritic cells.

 Tel: 1-631-559-9269 1-516-512-3133

 Email: info@creative-biomart.com  Fax: 1-631-938-8127

 45-1 Ramsey Road, Shirley, NY 11967, USA

Predicted N Terminal	Lys32
Form	Lyophilized from 0.22 µm filtered solution in PBS, pH7.4, 10% trehalose.
Molecular Mass	The protein has a calculated MW of 64.3 kDa. The protein migrates as 90-100 kDa under reducing (R) condition (SDS-PAGE) due to glycosylation.
Endotoxin	Less than 1.0 EU per µg by the LAL method.
Purity	>95% as determined by SDS-PAGE.
Storage	<p>For long term storage, the product should be stored at lyophilized state at -20 centigrade or lower.</p> <p>Please avoid repeated freeze-thaw cycles.</p> <p>This product is stable after storage at:</p> <ul style="list-style-type: none"> -20 to -70 centigrade for 12 months in lyophilized state; -70 centigrade for 3 months under sterile conditions after reconstitution.
Reconstitution	It is recommended that sterile water be added to the vial to prepare a stock solution of 0.2 ug/ul. Centrifuge the vial at 4°C before opening to recover the entire contents.

GENE INFORMATION

Gene Name	SIRPA
Official Symbol	SIRPA
Synonyms	SIRPA; signal-regulatory protein alpha; tyrosine-protein phosphatase non-receptor type substrate 1; mSIRP-alpha1; sirp-alpha-1; myD-1 antigen; SHP substrate 1; inhibitory receptor SHPS-1; signal-regulatory protein alpha-1; CD172 antigen-like family member A; brain immunological-like with tyrosine-based motifs; protein tyrosine

 Tel: 1-631-559-9269 1-516-512-3133

 Email: info@creative-biomart.com  Fax: 1-631-938-8127

 45-1 Ramsey Road, Shirley, NY 11967, USA

phosphatase, non-receptor type substrate 1; brain Ig-like molecule with tyrosine-based activation motifs; Bit; P84; SIRP; SHP-1; CD172a; Ptpns1; SHPS-1; AI835480

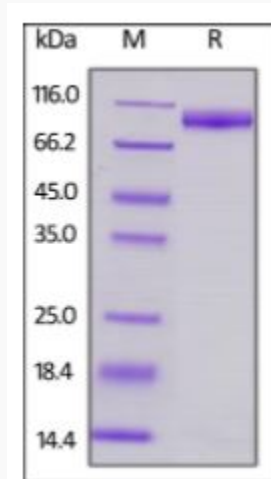
Gene ID 19261

mRNA Refseq NM_001177646

Protein Refseq NP_001171117

UniProt ID P97797

SDS-PAGE of SIRPA-936M



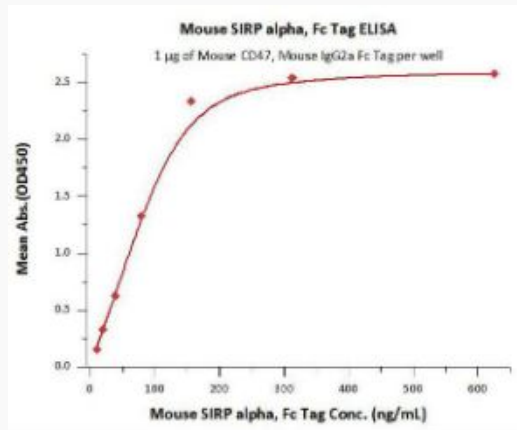
Mouse SIRP alpha, Fc Tag on SDS-PAGE under reducing (R) condition. The gel was stained overnight with Coomassie Blue. The purity of the protein is greater than 95%.

 Tel: 1-631-559-9269 1-516-512-3133

 Email: info@creative-biomart.com  Fax: 1-631-938-8127

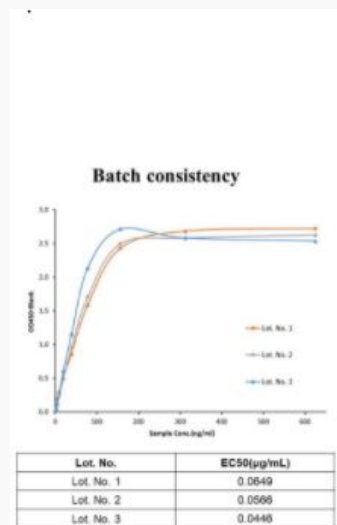
 45-1 Ramsey Road, Shirley, NY 11967, USA

Bioactivity-ELISA of SIRPA-936M



Immobilized Mouse CD47, Mouse IgG2a Fc Tag, low endotoxin at 10 µg/mL (100 µL/well) can bind Mouse SIRP alpha, Fc Tag with a linear range of 10-156 ng/ml (QC tested).

Bioactivity-ELISA



Batch consistency of Bioactivity-ELISA

Tel: 1-631-559-9269 1-516-512-3133

Email: info@creative-biomart.com Fax: 1-631-938-8127

45-1 Ramsey Road, Shirley, NY 11967, USA