

## Recombinant Human SIRPB1 Protein, C-His-tagged

Cat. No. SIRPB1-006H Lot. No. (See product label)

### SPECIFICATION

**Product Overview** Recombinant Human SIRPB1 Protein with C-His tag was expressed in E. coli.

**Species** Human

**Source** E.coli

#### Description

SIRPs (signal-regulatory proteins) are a family of transmembrane glycoproteins that were identified by their association with the Src homology 2 domain-containing protein-tyrosine phosphatase SHP-2 in response to Insulin. The SIRP family negatively regulates the PI 3-K pathway, which may diminish EGFR-mediated motility and survival phenotypes that contribute to transformation of certain cell types. SIRP- $\alpha$ 1 is a transmembrane protein which contains an extracellular portion with three immunoglobulin-like structures and a cytoplasmic region with four potential tyrosine phosphorylation sites. SIRP- $\alpha$ 1 is a substrate for activated receptor tyrosine kinases. In its tyrosine phosphorylated form, SIRP- $\alpha$ 1 binds to SH-PTP2 through SH2 interactions and acts as an SH-PTP2 substrate. SIRP- $\alpha$ 1 has been shown to have negative regulatory effects on cellular responses induced by growth factors, oncogenes and insulin. SIRP- $\beta$ 1 shares extensive sequence homology with SIRP- $\alpha$ 1 in its extracellular portion but lacks the cytoplasmic portion. SIRP- $\gamma$ , originally designated SIRP- $\beta$ 2 (SIRP-B2, CD172g) has unique characteristics from both the  $\alpha$  and  $\beta$  versions. SIRP- $\gamma$  is expressed on the majority of T cells and a proportion of B cells. CD47 associates with SIRP- $\gamma$ , and this interaction signals unidirectionally only.

**Molecular Mass** ~38 kDa

 Tel: 1-631-559-9269 1-516-512-3133

 Email: [info@creative-biomart.com](mailto:info@creative-biomart.com)  Fax: 1-631-938-8127

 45-1 Ramsey Road, Shirley, NY 11967, USA

<b>AA Sequence</b>	EDELQVIQPEKSVSVAAGESATLRCAMTSLIPVGPIMWFRGAGAGRELIYNQKEGHF PRVTTVSELTKRNNLDFSISISNITPADAGTYCYVKFRKGGSPDDVEFKSGAGTELSVR AKPSAPVVSGPAVRATPEHTVSFTCESHGFSPRDITLKWFKNGNELSDFQTNVDPA GDSVSYSIHSTARVVLTRGDVHSQVICEIAHITLQGDPLRGTANLSEAIRVPPTLEVTQ QPMRAENQANVTCQVSNFYPRGLQLTWLENGNVSRTETASTLIENKDGTYNWMS WLLVNTCAHRDDVVLTCQVEHDGQQAVSKSYALEISAHQKEHGS DITHEAALAPTA PL
<b>Purity</b>	Transferred into competent cells and the supernatant was purified by NI column affinity chromatography and the purity is > 85% (by SDS-PAGE).
<b>Notes</b>	For research use only, not for use in diagnostic procedure.
<b>Storage</b>	Store at 4 centigrade short term. Aliquot and store at -20 centigrade long term. Avoid freeze-thaw cycles.
<b>Concentration</b>	≥0.5 mg/mL
<b>Storage Buffer</b>	PBS, 4M Urea, pH7.4

## GENE INFORMATION

<b>Gene Name</b>	SIRPB1 signal-regulatory protein beta 1 [ Homo sapiens (human) ]
<b>Official Symbol</b>	SIRPB1
<b>Synonyms</b>	SIRPB1; signal-regulatory protein beta 1; signal-regulatory protein beta-1; CD172b; SIRP BETA 1; CD172 antigen-like family member B; SIRP-BETA-1; FLJ26614; DKFZp686A05192;
<b>Gene ID</b>	10326

 Tel: 1-631-559-9269 1-516-512-3133

 Email: [info@creative-biomart.com](mailto:info@creative-biomart.com)  Fax: 1-631-938-8127

 45-1 Ramsey Road, Shirley, NY 11967, USA

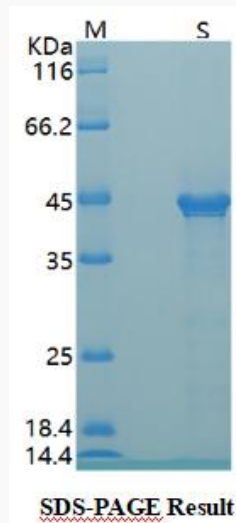
mRNA Refseq [NM\\_001083910](#)

Protein Refseq [NP\\_001077379](#)

MIM [603889](#)

UniProt ID [O00241](#)

**SDS-PAGE**



 Tel: 1-631-559-9269 1-516-512-3133

 Email: [info@creative-biomart.com](mailto:info@creative-biomart.com)  Fax: 1-631-938-8127

 45-1 Ramsey Road, Shirley, NY 11967, USA