

# Recombinant Full Length Human SIRPB1 Protein, C-Flag-tagged

**Cat. No.** SIRPB1-1499HFL    **Lot. No.** (See product label)

## SPECIFICATION

<b>Product Overview</b>	Recombinant Full Length Human SIRPB1 Protein, fused to Flag-tag at C-terminus, was expressed in Mammalian cells.
<b>Species</b>	Human
<b>Source</b>	Mammalian Cells
<b>Description</b>	The protein encoded by this gene is a member of the signal-regulatory-protein (SIRP) family, and also belongs to the immunoglobulin superfamily. SIRP family members are receptor-type transmembrane glycoproteins known to be involved in the negative regulation of receptor tyrosine kinase-coupled signaling processes. This protein was found to interact with TYROBP/DAP12, a protein bearing immunoreceptor tyrosine-based activation motifs. This protein was also reported to participate in the recruitment of tyrosine kinase SYK. Multiple transcript variants encoding different isoforms have been found for this gene.
<b>Form</b>	25 mM Tris HCl, pH 7.3, 100 mM glycine, 10% glycerol.
<b>Molecular Mass</b>	40.8 kDa
<b>AA Sequence</b>	MPVPASWPHLPSPFLLMTHLLGRLTGVAGEDELQVIQPEKSVSVAAGESATLCCAM TSLIPVGPIMWFRG AGAGRELIYNQKEGHFPRVTTVSELTKRNNLDFSISISNITPAD AGTYYCVKFRKGGSPDDVEFKSGAGTE LSVRAKPSAPVVSGPAVRATPEHTVSFTC ESHGFSPRDITLKWFKNGNELSDFQTNVDPAGDSVSYSIHS TARVVLTRGDVHSQV

 Tel: 1-631-559-9269    1-516-512-3133

 Email: [info@creative-biomart.com](mailto:info@creative-biomart.com)     Fax: 1-631-938-8127

 45-1 Ramsey Road, Shirley, NY 11967, USA



ICEMAHITLQGDPLRGTANLSEAIRVPPTLEVTQQPMRAENQANVTCQVSNFYPR G  
LQLTWLENGNVSRTETASTLIENKDGTYNWMSWLLVNTCAHRDDVVLTCQVEHDG  
QQA VSKSYALEISA  
HQKEHGS DITHEPALAPTAPLLVALLLGP KLLL VVGVS AIIYICWKQKATRTRPLEQKLI  
SEEDLAANDILDYKDDDDKV

**Purity** > 80% as determined by SDS-PAGE and Coomassie blue staining.

**Stability** Stable for 12 months from the date of receipt of the product under proper storage and handling conditions. Avoid repeated freeze-thaw cycles.

**Storage** Store at -80 centigrade.

**Concentration** >50 ug/mL as determined by microplate BCA method.

**Preparation** Recombinant protein was captured through anti-DDK affinity column followed by conventional chromatography steps.

**Protein Families** Druggable Genome, Transmembrane

**Full Length** Full L.

## GENE INFORMATION

**Gene Name** SIRPB1 signal regulatory protein beta 1 [ Homo sapiens (human) ]

**Official Symbol** SIRPB1

**Synonyms** CD172b; SIRP-BETA-1

**Gene ID** 10326

Tel: 1-631-559-9269 1-516-512-3133

Email: [info@creative-biomart.com](mailto:info@creative-biomart.com) Fax: 1-631-938-8127

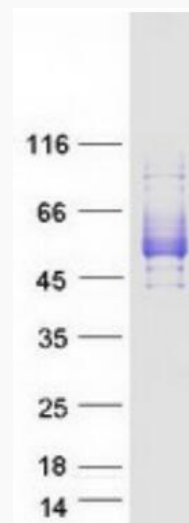
45-1 Ramsey Road, Shirley, NY 11967, USA

mRNA Refseq [NM\\_006065.5](#)

Protein Refseq [NP\\_006056.2](#)

MIM [603889](#)

UniProt ID [O00241](#)



Coomassie blue staining of purified SIRPB1 protein.

 Tel: 1-631-559-9269 1-516-512-3133

 Email: [info@creative-biomart.com](mailto:info@creative-biomart.com)  Fax: 1-631-938-8127

 45-1 Ramsey Road, Shirley, NY 11967, USA