

Recombinant Human SIRPB1 protein, His-Avi-tagged

Cat. No. SIRPB1-241H Lot. No. (See product label)

SPECIFICATION

Product Overview	Human SIRP beta Protein is expressed from mammalian with His Tag and Avi Tag at the C-terminal. It contains Glu30-Ala369.
Species	Human
Source	HEK293
ProteinLength	Glu30-Ala369
Description	SIRP beta 1 is a type I transmembrane protein belonging to the SIRP family within the Ig superfamily. Members of this family are characterized by an extracellular region containing a Vset Ig domain containing a J-like sequence and two C1-set Ig domains. SIRP beta 1 is immunoglobulin-like cell surface receptor involved in the negative regulation of receptor tyrosine kinase-coupled signaling processes. Participates also in the recruitment of tyrosine kinase SYK. Triggers activation of myeloid cells when associated with TYROBP.
Form	Supplied as 0.22um filtered solution in PBS (pH 7.4).
Molecular Mass	The protein has a predicted MW of 40 KDa. Due to glycosylation, the protein migrates to 52- 60KDa based on Bis-Tris PAGE result.
Endotoxin	Less than 0.001EU per ug by the LAL method.
Purity	> 95% as determined by SDS-PAGE; > 95% as determined by HPLC

 Tel: 1-631-559-9269 1-516-512-3133

 Email: info@creative-biomart.com  Fax: 1-631-938-8127

 45-1 Ramsey Road, Shirley, NY 11967, USA

Storage The product should be stored at -70°C. Please do not repeated freeze-thaw cycles.

GENE INFORMATION

Gene Name SIRPB1 signal regulatory protein beta 1[Homo sapiens (human)]

Official Symbol SIRPB1

Synonyms CD172 antigen-like family member B; CD172b antigen; CD172b; DKFZp686A05192; FLJ26614; signal-regulatory protein beta 1; signal-regulatory protein beta-1; SIRP beta 1; SIRPB1; SIRP-beta-1 isoform 3; SIRP-BETA-1

Gene ID 10326

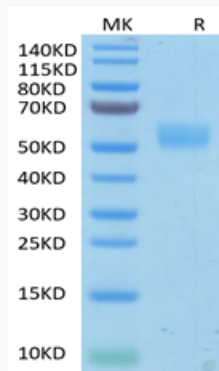
mRNA Refseq NM_001083910.4

Protein Refseq NP_001077379.1

MIM 603889

UniProt ID O00241

**Tris-Bis PAGE of
SIRPB1-241H**



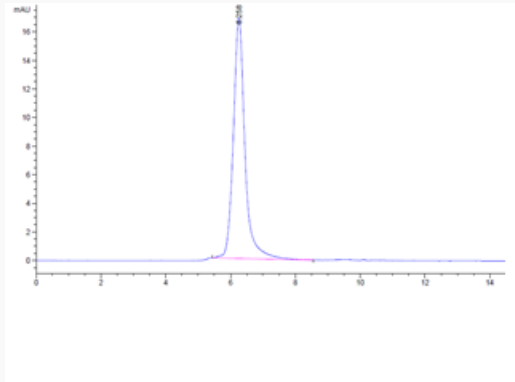
 Tel: 1-631-559-9269 1-516-512-3133

 Email: info@creative-biomart.com  Fax: 1-631-938-8127

 45-1 Ramsey Road, Shirley, NY 11967, USA



**SEC-HPLC of
SIRPB1-241H**



☎ Tel: 1-631-559-9269 1-516-512-3133

☎ Email: info@creative-biomart.com ☎ Fax: 1-631-938-8127

☎ 45-1 Ramsey Road, Shirley, NY 11967, USA