

Recombinant Human SIRPB1 protein, Fc-tagged

Cat. No. SIRPB1-345H Lot. No. (See product label)

SPECIFICATION

Product Overview	Recombinant Human SIRPB1 protein (Glu30-Leu371), fused to human IgG1 Fc tag at C-terminus, was expressed in human 293 cells (HEK293).
Species	Human
Source	HEK293
ProteinLength	342
Description	Signal-regulatory protein beta-1 (SIRP beta 1) also known as SIRP β 1, belongs to signal-regulatory-protein (SIRP) family, and immunoglobulin superfamily. SIRP β 1 is a transmembrane protein that has three Ig-like domains in its extracellular region and a short cytoplasmic tail. Human SIRP β 1 is expressed on monocytes and granulocytes but not on lymphocytes. SIRP beta 1 contains short cytoplasmic domains that lack cytoplasmic sequence motifs capable of recruiting SHP-2 and SHP-1. In addition, they contain a single basic lysine residue within the hydrophobic transmembrane domain.
Form	Lyophilized from 0.22 um filtered solution in Tris with Glycine, Arginine and NaCl, pH7.5, 10% trehalose.
Molecular Mass	The protein has a calculated MW of 63.7 kDa. The protein migrates as 70-80 kDa under reducing (R) condition (SDS-PAGE) due to glycosylation.
Endotoxin	Less than 1.0 EU per ug by the LAL method.

 Tel: 1-631-559-9269 1-516-512-3133

 Email: info@creative-biomart.com  Fax: 1-631-938-8127

 45-1 Ramsey Road, Shirley, NY 11967, USA

Purity	>90% as determined by SDS-PAGE.
Storage	<p>For long term storage, the product should be stored at lyophilized state at -20 centigrade or lower.</p> <p>Please avoid repeated freeze-thaw cycles.</p> <p>This product is stable after storage at:</p> <p>-20 centigrade to -70 centigrade for 12 months in lyophilized state; -70 centigrade for 3 months under sterile conditions after reconstitution.</p>
Reconstitution	It is recommended that sterile water be added to the vial to prepare a stock solution of 0.2 ug/ul. Centrifuge the vial at 4°C before opening to recover the entire contents.

GENE INFORMATION

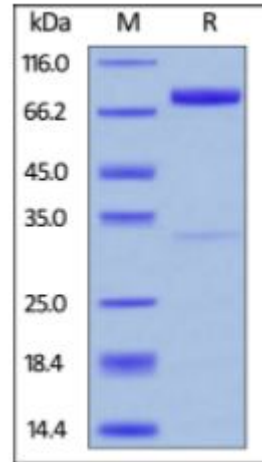
Gene Name	SIRPB1
Official Symbol	SIRPB1
Synonyms	SIRPB1; signal-regulatory protein beta 1; signal-regulatory protein beta-1; CD172b; SIRP BETA 1; CD172 antigen-like family member B; SIRP-BETA-1; FLJ26614; DKFZp686A05192
Gene ID	10326
mRNA Refseq	NM_001083910
Protein Refseq	NP_001077379
MIM	603889
UniProt ID	O00241

 Tel: 1-631-559-9269 1-516-512-3133


 Email: info@creative-biomart.com  Fax: 1-631-938-8127

 45-1 Ramsey Road, Shirley, NY 11967, USA

**SDS-PAGE of
SIRPB1-345H**



Human SIRP beta, Fc Tag on SDS-PAGE under reducing (R) condition. The gel was stained overnight with Coomassie Blue. The purity of the protein is greater than 90%.

 Tel: 1-631-559-9269 1-516-512-3133

 Email: info@creative-biomart.com  Fax: 1-631-938-8127

 45-1 Ramsey Road, Shirley, NY 11967, USA