

## Recombinant Human SIRPB1 Protein (Ser127-Gly356), N-His tagged

Cat. No. SIRPB1-5526H    Lot. No. (See product label)

### SPECIFICATION

<b>Product Overview</b>	Recombinant human SIRPB1 (Ser127-Gly356) fused with the N-His tag was expressed in E. coli.
<b>Species</b>	Human
<b>Source</b>	E.coli
<b>ProteinLength</b>	Ser127-Gly356
<b>Form</b>	Lyophilized powder/frozen liquid
<b>Molecular Mass</b>	27.47 kDa
<b>Purity</b>	> 90 % as determined by SDS-PAGE
<b>Notes</b>	For research use only.
<b>Storage</b>	Use a manual defrost freezer and avoid repeated freeze thaw cycles. Store at 2 to 8 centigrade for one week. Store at -20 to -80 centigrade for twelve months from the date of receipt.
<b>Storage Buffer</b>	0.01M PBS, pH 7.4, 0.02 % NLS
<b>Reconstitution</b>	Reconstitute in sterile water for a stock solution.

 Tel: 1-631-559-9269    1-516-512-3133

 Email: [info@creative-biomart.com](mailto:info@creative-biomart.com)     Fax: 1-631-938-8127

 45-1 Ramsey Road, Shirley, NY 11967, USA

**Shipping** They are shipped out with dry ice/blue ice unless customers require otherwise.

## GENE INFORMATION

**Gene Name** SIRPB1 signal-regulatory protein beta 1 [ Homo sapiens (human) ]

**Official Symbol** SIRPB1

**Synonyms** SIRPB1; signal-regulatory protein beta 1; signal-regulatory protein beta-1; CD172b; SIRP BETA 1; CD172 antigen-like family member B; SIRP-BETA-1; FLJ26614; DKFZp686A05192;

**Gene ID** 10326

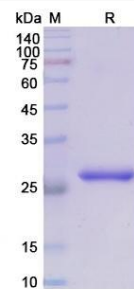
**mRNA Refseq** NM\_001083910

**Protein Refseq** NP\_001077379

**MIM** 603889

**UniProt ID** O00241

### SDS-PAGE



 Tel: 1-631-559-9269 1-516-512-3133

 Email: [info@creative-biomart.com](mailto:info@creative-biomart.com)  Fax: 1-631-938-8127

 45-1 Ramsey Road, Shirley, NY 11967, USA