

Recombinant Human SIRPB1 protein, His-Avi-tagged

Cat. No. SIRPB1-6574H Lot. No. (See product label)

SPECIFICATION

| | |
|-------------------------|--|
| Product Overview | Recombinant Human SIRPB1 protein(Q5TFQ8-1)(Glu30-Leu371), fused with C-terminal His and Avi tag, was expressed in HEK293. |
| Species | Human |
| Source | HEK293 |
| ProteinLength | Glu30-Leu371 |
| Tag | C-His-Avi |
| Form | Lyophilized from 0.22µm filtered solution in PBS (pH 7.4). Normally 5% trehalose is added as protectant before lyophilization. |
| Molecular Mass | The protein has a predicted MW of 39.9 kDa. Due to glycosylation, the protein migrates to 60-70 kDa based on Tris-Bis PAGE result. |
| Endotoxin | Less than 1EU per µg by the LAL method. |
| Purity | > 95% as determined by Tris-Bis PAGE;> 95% as determined by HPLC |
| Storage | Reconstituted protein stable at -80°C for 12 months, 4°C for 1 week. Use a manual defrost freezer and avoid repeated freeze-thaw cycles. |
| Reconstitution | Centrifuge tubes before opening. Reconstituting to a concentration more than 100 |

 Tel: 1-631-559-9269 1-516-512-3133

 Email: info@creative-biomart.com  Fax: 1-631-938-8127

 45-1 Ramsey Road, Shirley, NY 11967, USA

µg/ml is recommended. Dissolve the lyophilized protein in distilled water.

GENE INFORMATION

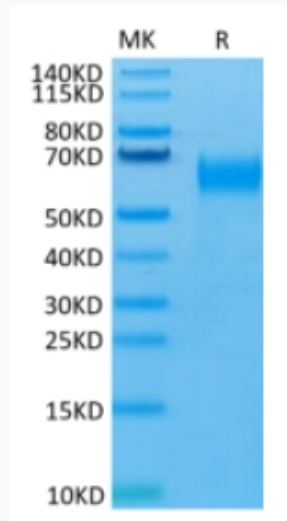
| | |
|------------------------|---|
| Gene Name | SIRPB1 signal-regulatory protein beta 1 [Homo sapiens] |
| Official Symbol | SIRPB1 |
| Synonyms | SIRPB1; signal-regulatory protein beta 1; signal-regulatory protein beta-1; CD172b; SIRP BETA 1; CD172 antigen-like family member B; SIRP-BETA-1; FLJ26614; DKFZp686A05192; |
| Gene ID | 10326 |
| mRNA Refseq | NM_001083910 |
| Protein Refseq | NP_001077379 |
| MIM | 603889 |
| UniProt ID | O00241 |

 Tel: 1-631-559-9269 1-516-512-3133

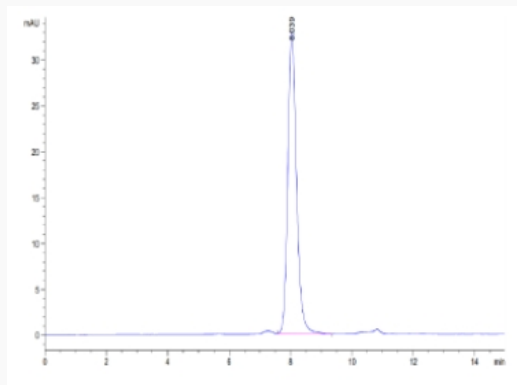
 Email: info@creative-biomart.com  Fax: 1-631-938-8127

 45-1 Ramsey Road, Shirley, NY 11967, USA

Tris-Bis PAGE



SEC-HPLC



 Tel: 1-631-559-9269 1-516-512-3133

 Email: info@creative-biomart.com  Fax: 1-631-938-8127

 45-1 Ramsey Road, Shirley, NY 11967, USA