

# Recombinant Human SIRPB1 Protein, Myc/DDK-tagged, C13 and N15-labeled

**Cat. No.** SIRPB1-6667H    **Lot. No.** (See product label)

## SPECIFICATION

### Product Overview

SIRPB1 MS Standard C13 and N15-labeled recombinant protein (NP\_001129316) with a C-terminal MYC/DDK tag, was expressed in HEK293 cells.

### Species

Human

### Source

HEK293

### Description

The protein encoded by this gene is a member of the signal-regulatory-protein (SIRP) family, and also belongs to the immunoglobulin superfamily. SIRP family members are receptor-type transmembrane glycoproteins known to be involved in the negative regulation of receptor tyrosine kinase-coupled signaling processes. This protein was found to interact with TYROBP/DAP12, a protein bearing immunoreceptor tyrosine-based activation motifs. This protein was also reported to participate in the recruitment of tyrosine kinase SYK. Multiple transcript variants encoding different isoforms have been found for this gene.

### Molecular Mass

43.2 kDa

### AA Sequence

MPVPASWPHLPSPFLLMTHLLGRLTGVAGEDELQVIQPEKSVSVAAGESATLCCAM  
 TSLIPVGPIMWFRGAGAGRELIYNQKEGHFPRVTTVSELTKRNNLDFSISISNITPADA  
 GTYYCVKFRKGGSPDDVEFKSGAGTELSVRAKPSAPVVSGPAVRATPEHTVSFTCES  
 HGFSPRDITLKWFKNGNELSDFQTNVDPAGDSVSYSIHSTARVVLTRGDVHSQVICE  
 MAHITLQGDPLRGTANLSEAIRVPPTLEVTTQQPMRAENQANVTCQVSNFYPRGLQL

 Tel: 1-631-559-9269    1-516-512-3133

 Email: [info@creative-biomart.com](mailto:info@creative-biomart.com)     Fax: 1-631-938-8127

 45-1 Ramsey Road, Shirley, NY 11967, USA

TWLENGNVSRTETASTLIENKDGTYNWMSWLLVNTCAHRDDVVLTCQVEHDGQQA  
 VSKSYALEISAHQKEHGS DITHEPALAPTAPLLVALLLGPKLLL VVGVS AIIYICWKQKA  
 TRTRPLEQKLISEEDLAANDILDYKDDDDKV

**Purity** > 80% as determined by SDS-PAGE and Coomassie blue staining

**Stability** Stable for 3 months from receipt of products under proper storage and handling conditions.

**Storage** Store at -80 centigrade. Avoid repeated freeze-thaw cycles.

**Concentration** 50 µg/mL as determined by BCA

**Storage Buffer** 100 mM glycine, 25 mM Tris-HCl, pH 7.3.

## GENE INFORMATION

**Gene Name** [SIRPB1 signal-regulatory protein beta 1 \[ Homo sapiens \(human\) \]](#)

**Official Symbol** [SIRPB1](#)

**Synonyms** SIRPB1; signal-regulatory protein beta 1; signal-regulatory protein beta-1; CD172b; SIRP BETA 1; CD172 antigen-like family member B; SIRP-BETA-1; FLJ26614; DKFZp686A05192;

**Gene ID** [10326](#)

**mRNA Refseq** [NM\\_001135844](#)

**Protein Refseq** [NP\\_001129316](#)

 Tel: 1-631-559-9269 1-516-512-3133

 Email: [info@creative-biomart.com](mailto:info@creative-biomart.com)  Fax: 1-631-938-8127

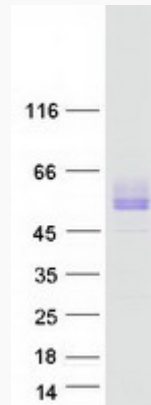
 45-1 Ramsey Road, Shirley, NY 11967, USA



MIM 603889

UniProt ID O00241

SDS-PAGE



Tel: 1-631-559-9269 1-516-512-3133

Email: [info@creative-biomart.com](mailto:info@creative-biomart.com) Fax: 1-631-938-8127

45-1 Ramsey Road, Shirley, NY 11967, USA