

Recombinant Human SIRPG Protein, C-His-tagged

Cat. No. SIRPG-117H Lot. No. (See product label)

SPECIFICATION

Product Overview Recombinant Human SIRPG Protein with C-His tag was expressed in E. coli.

Species Human

Source E.coli

Description

SIRPs (signal-regulatory proteins) are a family of transmembrane glycoproteins that were identified by their association with the Src homology 2 domain-containing protein-tyrosine phosphatase SHP-2 in response to Insulin. The SIRP family negatively regulates the PI 3-K pathway, which may diminish EGFR-mediated motility and survival phenotypes that contribute to transformation of certain cell types. SIRP- α 1 is a transmembrane protein which contains an extracellular portion with three immunoglobulin-like structures and a cytoplasmic region with four potential tyrosine phosphorylation sites. SIRP- α 1 is a substrate for activated receptor tyrosine kinases. In its tyrosine phosphorylated form, SIRP- α 1 binds to SH-PTP2 through SH2 interactions and acts as an SH-PTP2 substrate. SIRP- α 1 has been shown to have negative regulatory effects on cellular responses induced by growth factors, oncogenes and insulin. SIRP- β 1 shares extensive sequence homology with SIRP- α 1 in its extracellular portion but lacks the cytoplasmic portion. SIRP- γ , originally designated SIRP- β 2 (SIRP-B2, CD172g) has unique characteristics from both the α and β versions. SIRP- γ is expressed on the majority of T cells and a proportion of B cells. CD47 associates with SIRP- γ , and this interaction signals unidirectionally only.

Molecular Mass ~37 kDa

 Tel: 1-631-559-9269 1-516-512-3133

 Email: info@creative-biomart.com  Fax: 1-631-938-8127

 45-1 Ramsey Road, Shirley, NY 11967, USA

AA Sequence	EEELQMIQPEKLLLVTVGKTATLHCTVTSLLPVGPVLWFRGVGPGRELIYNQKEGHF PRVTTVSDLTKRNNMDFSIRISSITPADVGYCYVKFRKGSPEVFEKSGPGTEMAL GAKPSAPVVLGPAARTTPEHTVSFTCESHGFSPRDITLKWFKNGNELSDFQTNVDP TGQSVAYSIRSTARVVLDPVDVRSQVICEVAHVTLQGDPLRGTANLSEAIRVPPTLE VTQQPMRVGNQVNVTCQVRKFYPQSLQLTWSSENGNVCQRETASTLTENKDGTYN WTSWFLVNISDQRDDVVLTCQVKHGDGQLAVSKRLALEVTVHQQDQSSDATP
Purity	Transferred into competent cells and the supernatant was purified by NI column affinity chromatography and the purity is > 85% (by SDS-PAGE).
Notes	For research use only, not for use in diagnostic procedure.
Storage	Store at 4 centigrade short term. Aliquot and store at -20 centigrade long term. Avoid freeze-thaw cycles.
Concentration	≥0.5 mg/mL
Storage Buffer	PBS, 4M Urea, pH7.4
GENE INFORMATION	
Gene Name	SIRPG signal-regulatory protein gamma [Homo sapiens (human)]
Official Symbol	SIRPG
Synonyms	SIRPG; signal-regulatory protein gamma; signal regulatory protein beta 2 , SIRPB2; bA77C3.1; CD172g; SIRP B2; SIRPgamma; SIRP-gamma; SIRP beta 2; SIRP-beta-2; CD172g antigen; signal-regulatory protein beta 2; signal-regulatory protein beta-2; CD172 antigen-like family member B; SIRPB2; SIRP-B2; FLJ42230;
Gene ID	55423

 Tel: 1-631-559-9269 1-516-512-3133

 Email: info@creative-biomart.com  Fax: 1-631-938-8127

 45-1 Ramsey Road, Shirley, NY 11967, USA

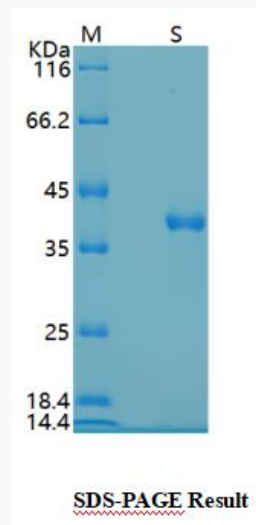
mRNA Refseq [NM_001039508](#)

Protein Refseq [NP_001034597](#)

MIM [605466](#)

UniProt ID [Q9P1W8](#)

SDS-PAGE



 Tel: 1-631-559-9269 1-516-512-3133

 Email: info@creative-biomart.com  Fax: 1-631-938-8127

 45-1 Ramsey Road, Shirley, NY 11967, USA