

## Recombinant Human SIRPG Protein (Met1-Ser364), C-His tagged

Cat. No. SIRPG-4972H Lot. No. (See product label)

### SPECIFICATION

<b>Product Overview</b>	Recombinant human SIRPG (Met1-Ser364) fused with the C-terminal His tag was expressed in Mammalian cells.
<b>Species</b>	Human
<b>Source</b>	Mammalian Cells
<b>ProteinLength</b>	Met1-Ser364
<b>Form</b>	Lyophilized powder/frozen liquid
<b>Molecular Mass</b>	40.04 kDa
<b>Endotoxin</b>	< 1.0 EU/μg of the protein as determined by the LAL method.
<b>Purity</b>	>90% as determined by SDS-PAGE.
<b>Notes</b>	For research use only.
<b>Storage</b>	Use a manual defrost freezer and avoid repeated freeze thaw cycles. Store at 2 to 8 centigrade for one week. Store at -20 to -80 centigrade for twelve months from the date of receipt.
<b>Storage Buffer</b>	Supplied as solution form in PBS or lyophilized from PBS.

 Tel: 1-631-559-9269 1-516-512-3133

 Email: [info@creative-biomart.com](mailto:info@creative-biomart.com)  Fax: 1-631-938-8127

 45-1 Ramsey Road, Shirley, NY 11967, USA

**Reconstitution** Reconstitute in sterile water for a stock solution.

**Shipping** They are shipped out with dry ice/blue ice unless customers require otherwise.

## GENE INFORMATION

**Gene Name** SIRPG signal-regulatory protein gamma [ Homo sapiens (human) ]

**Official Symbol** SIRPG

**Synonyms** SIRPG; signal-regulatory protein gamma; signal regulatory protein beta 2, SIRPB2; bA77C3.1; CD172g; SIRP B2; SIRPgamma; SIRP-gamma; SIRP beta 2; SIRP-beta-2; CD172g antigen; signal-regulatory protein beta 2; signal-regulatory protein beta-2; CD172 antigen-like family member B; SIRPB2; SIRP-B2; FLJ42230;

**Gene ID** 55423

**mRNA Refseq** NM\_001039508

**Protein Refseq** NP\_001034597

**MIM** 605466

**UniProt ID** Q9P1W8

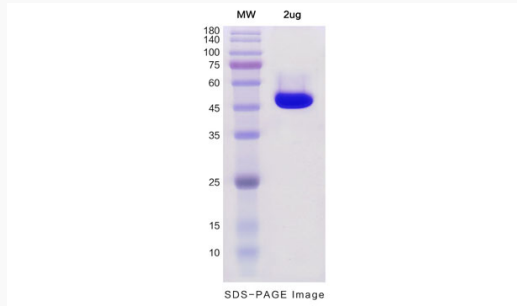
 Tel: 1-631-559-9269 1-516-512-3133

 Email: [info@creative-biomart.com](mailto:info@creative-biomart.com)  Fax: 1-631-938-8127

 45-1 Ramsey Road, Shirley, NY 11967, USA



## SDS-PAGE



Tel: 1-631-559-9269 1-516-512-3133

Email: [info@creative-biomart.com](mailto:info@creative-biomart.com) Fax: 1-631-938-8127

45-1 Ramsey Road, Shirley, NY 11967, USA