

Recombinant Human SIRPG Protein (Glu29-Pro360), C-Fc tagged

Cat. No. SIRPG-5972H Lot. No. (See product label)

SPECIFICATION

Product Overview	Recombinant human SIRPG (Glu29-Pro360) fused with the C-terminal Fc tag was expressed in mammalian cells.
Species	Human
Source	Mammalian Cells
ProteinLength	Glu29-Pro360
Form	Lyophilized powder/frozen liquid
Molecular Mass	61.52 kDa
Purity	> 90 % as determined by SDS-PAGE
Notes	For research use only.
Storage	Use a manual defrost freezer and avoid repeated freeze thaw cycles. Store at 2 to 8 centigrade for one week. Store at -20 to -80 centigrade for twelve months from the date of receipt.
Storage Buffer	Supplied as solution form in PBS or lyophilized from PBS.
Reconstitution	Reconstitute in sterile water for a stock solution.

 Tel: 1-631-559-9269 1-516-512-3133

 Email: info@creative-biomart.com  Fax: 1-631-938-8127

 45-1 Ramsey Road, Shirley, NY 11967, USA

Shipping They are shipped out with dry ice/blue ice unless customers require otherwise.

GENE INFORMATION

Gene Name SIRPG signal-regulatory protein gamma [Homo sapiens (human)]

Official Symbol SIRPG

Synonyms SIRPG; signal-regulatory protein gamma; signal regulatory protein beta 2, SIRPB2; bA77C3.1; CD172g; SIRP B2; SIRPgamma; SIRP-gamma; SIRP beta 2; SIRP-beta-2; CD172g antigen; signal-regulatory protein beta 2; signal-regulatory protein beta-2; CD172 antigen-like family member B; SIRPB2; SIRP-B2; FLJ42230;

Gene ID 55423

mRNA Refseq NM_001039508

Protein Refseq NP_001034597

MIM 605466

UniProt ID Q9P1W8

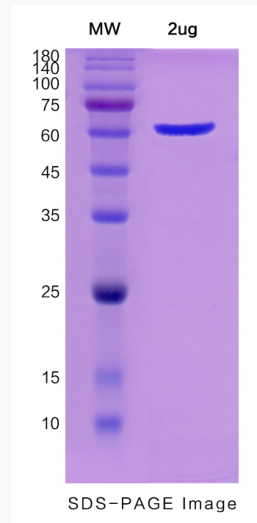
 Tel: 1-631-559-9269 1-516-512-3133

 Email: info@creative-biomart.com  Fax: 1-631-938-8127

 45-1 Ramsey Road, Shirley, NY 11967, USA



SDS-PAGE



Tel: 1-631-559-9269 1-516-512-3133

Email: info@creative-biomart.com Fax: 1-631-938-8127

45-1 Ramsey Road, Shirley, NY 11967, USA