

Recombinant Human SIRPG protein, His-Avi-tagged

Cat. No. SIRPG-918H Lot. No. (See product label)

SPECIFICATION

Product Overview	Recombinant Human SIRPG protein(Q9P1W8)(Glu29-Pro360), fused with C-terminal His and Avi tag, was expressed in HEK293.
Species	Human
Source	HEK293
ProteinLength	Glu29-Pro360
Tag	C-His-Avi
Form	Lyophilized from 0.22µm filtered solution in PBS (pH 7.4). Normally 5% trehalose is added as protectant before lyophilization.
Bio-activity	Immobilized Human SIRP Gamma, His Tag at 5µg/ml (100µl/well) on the plate. Dose response curve for Human CD47, hFc Tag with the EC50 of 2.46µg/ml determined by ELISA.
Molecular Mass	The protein has a predicted MW of 39.7 kDa. Due to glycosylation, the protein migrates to 45-52 kDa based on Tris-Bis PAGE result.
Endotoxin	Less than 1EU per µg by the LAL method.
Purity	> 95% as determined by Tris-Bis PAGE; > 95% as determined by HPLC

 Tel: 1-631-559-9269 1-516-512-3133

 Email: info@creative-biomart.com  Fax: 1-631-938-8127

 45-1 Ramsey Road, Shirley, NY 11967, USA

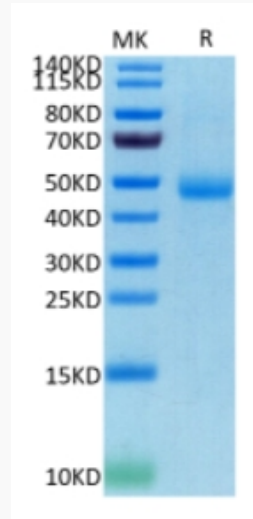
Storage	Reconstituted protein stable at -80°C for 12 months, 4°C for 1 week. Use a manual defrost freezer and avoid repeated freeze-thaw cycles.
Reconstitution	Centrifuge tubes before opening. Reconstituting to a concentration more than 100 µg/ml is recommended. Dissolve the lyophilized protein in distilled water.
GENE INFORMATION	
Gene Name	SIRPG signal-regulatory protein gamma [Homo sapiens]
Official Symbol	SIRPG
Synonyms	SIRPG; signal-regulatory protein gamma; signal regulatory protein beta 2 , SIRPB2; bA77C3.1; CD172g; SIRP B2; SIRPgamma; SIRP-gamma; SIRP beta 2; SIRP-beta-2; CD172g antigen; signal-regulatory protein beta 2; signal-regulatory protein beta-2; CD172 antigen-like family member B; SIRPB2; SIRP-B2; FLJ42230;
Gene ID	55423
mRNA Refseq	NM_001039508
Protein Refseq	NP_001034597
MIM	605466
UniProt ID	Q9P1W8

 Tel: 1-631-559-9269 1-516-512-3133

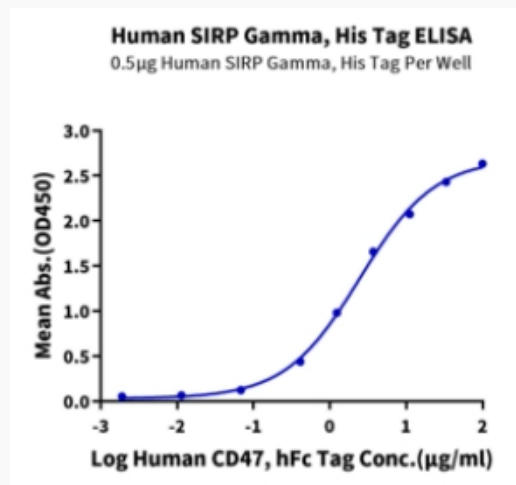
 Email: info@creative-biomart.com  Fax: 1-631-938-8127

 45-1 Ramsey Road, Shirley, NY 11967, USA

Tris-Bis PAGE



ELISA Data



 Tel: 1-631-559-9269 1-516-512-3133

 Email: info@creative-biomart.com  Fax: 1-631-938-8127

 45-1 Ramsey Road, Shirley, NY 11967, USA