

Recombinant Full Length Human SIRT1 Protein, C-Flag-tagged

Cat. No. SIRT1-1308HFL Lot. No. (See product label)

SPECIFICATION

Product Overview	Recombinant Full Length Human SIRT1 Protein, fused to Flag-tag at C-terminus, was expressed in Mammalian cells.
Species	Human
Source	Mammalian Cells
Description	This gene encodes a member of the sirtuin family of proteins, homologs to the yeast Sir2 protein. Members of the sirtuin family are characterized by a sirtuin core domain and grouped into four classes. The functions of human sirtuins have not yet been determined; however, yeast sirtuin proteins are known to regulate epigenetic gene silencing and suppress recombination of rDNA. Studies suggest that the human sirtuins may function as intracellular regulatory proteins with mono-ADP-ribosyltransferase activity. The protein encoded by this gene is included in class I of the sirtuin family. Alternative splicing results in multiple transcript variants.
Form	25 mM Tris HCl, pH 7.3, 100 mM glycine, 10% glycerol.
Molecular Mass	81.5 kDa
AA Sequence	MADEAALALQPGGSPSAAGADREAASSPAGEPLRKRPRRDGPGGLERSPGEPGGAA PEREVPAAARGCPGA AAAALWREAEAEAAAAGGEQEAQATAAAGEGDNGPGLQG PSREPPLADNLYDEDDDDDEGEEEEEEAAAAAI GYRDNLLFGDEIITNGFHSCESEDEED RASHASSDWTTPRPRIGPYTFVQQHLMIGTDPRTILKDLLPETI PPELDDMTLWQIV INILSEPPKRKKRKDINTIEDAVKLLQECKKIIVLTGAGVSVSCGIPDFRSRDGIY ARLA

 Tel: 1-631-559-9269 1-516-512-3133

 Email: info@creative-biomart.com  Fax: 1-631-938-8127

 45-1 Ramsey Road, Shirley, NY 11967, USA

VDFPDLDPQAMFDIEYFRKDPRPFFKFAKEIYPGQFQPSLCHKFIALSDKEGKLLRN
 YTQNIDTL EQVAGIQRIIQCHGSFATASCLICKYKVDCEAVRGDIFNQVPRCPRCPA
 DEPLAIMKPEIVFFGENLPE QFHRAMKYDKDEVDLLIVIGSSLKVRPVALIPSSIPHEV
 PQILINREPLPHLHFDVELLGDGCDVIINELC HRLGGEYAKLCCNPVKLSEITEKPPRTQ
 KELAYLSELPTPLHVSEDSSSPERTSPPDSSVIVTLLDQAA KSNDDLVDSESKGCM
 EEKPQEVQTSRNVESIAEQMENPDLKNVGSSTGEKNERTSVAGTVRKCPNRPVAK
 EQISRRLDGNQYLFLPPNRYIFHGAEVYSDSEDDVLSSSSSCGSNSDSGTCQSPSLE
 EPMEDESEIEEFYN
 GLEDEPDVPERAGGAGFGTDGDDQEAINAISVKQEVTDNMNYPSENKSTRTRPLEQK
 LISEEDLAANDILDYKDDDDKV

Purity	> 80% as determined by SDS-PAGE and Coomassie blue staining.
Stability	Stable for 12 months from the date of receipt of the product under proper storage and handling conditions. Avoid repeated freeze-thaw cycles.
Storage	Store at -80 centigrade.
Concentration	>50 ug/mL as determined by microplate BCA method.
Preparation	Recombinant protein was captured through anti-DDK affinity column followed by conventional chromatography steps.
Protein Families	Druggable Genome, Stem cell - Pluripotency, Transcription Factors
Full Length	Full L.

GENE INFORMATION

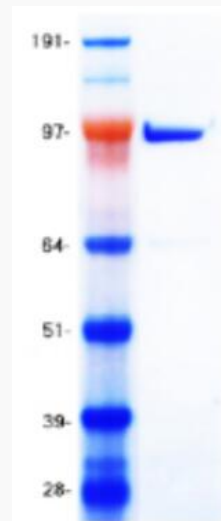
Gene Name [SIRT1 sirtuin 1 \[Homo sapiens \(human\) \]](#)

 Tel: 1-631-559-9269 1-516-512-3133

 Email: info@creative-biomart.com  Fax: 1-631-938-8127

 45-1 Ramsey Road, Shirley, NY 11967, USA

Official Symbol	SIRT1
Synonyms	SIR2; SIR2L1; SIR2alpha
Gene ID	23411
mRNA Refseq	NM_012238.5
Protein Refseq	NP_036370.2
MIM	604479
UniProt ID	Q96EB6



Coomassie blue staining of purified SIRT1 protein.

 Tel: 1-631-559-9269 1-516-512-3133

 Email: info@creative-biomart.com  Fax: 1-631-938-8127

 45-1 Ramsey Road, Shirley, NY 11967, USA