

Active Recombinant Human SIRT1 Protein, His tagged

Cat. No. SIRT1-658H Lot. No. (See product label)

SPECIFICATION

Product Overview	SIRT1 Protein, Human (His) is the recombinant human-derived SIRT1 protein, expressed by E.coli, with N-6*His labeled tag.
Species	Human
Source	E.coli
ProteinLength	2-747 aa
Description	<p>SIRT1, a NAD-dependent protein deacetylase, orchestrates the integration of various cellular functions, including cell cycle progression, response to DNA damage, metabolism, apoptosis, and autophagy, by modulating the acetylation status of numerous target proteins. Functioning as a sensor of the NAD(+)/NADH ratio, SIRT1 responds to changes in cellular energetics induced by factors such as glucose deprivation and caloric restriction. Its wide-ranging impact encompasses chromatin remodeling through histone deacetylation, ultimately leading to transcriptional regulation. SIRT1 engages in diverse interactions, deacetylating transcription factors, coregulators, and histones, thereby exerting both positive and negative regulation on target gene expression. Additionally, SIRT1 is implicated in critical processes such as DNA damage response, autophagy, circadian rhythm regulation, and metabolic homeostasis. Its multifaceted roles extend to the regulation of various cellular pathways and the maintenance of genomic integrity, highlighting its significance in cellular physiology and stress response.</p>

 Tel: 1-631-559-9269 1-516-512-3133

 Email: info@creative-biomart.com  Fax: 1-631-938-8127

 45-1 Ramsey Road, Shirley, NY 11967, USA

Form	Lyophilized powder. Lyophilized from a 0.22 µm filtered solution of 20 mM Tris-HCl, 0.5 M NaCl, 6% Trehalose, pH 8.0 or PBS, pH 7.4, 8% trehalose.
Bio-activity	Measured by its ability to remove the acetyl group from a fluorogenic peptide substrate Ac-RGK(Ac)-AMC in a coupled assay that incubate at room temperature in mode for 45 minutes. The specific activity is >15 pmol/min/µg.
Molecular Mass	Approximately 96 kDa
AASequence	ADEAALALQPGGSPSAAGADREAASSPAGEPLRKRPRRDGPGGLERSPGEPGGAAP EREVPAAARGCPGAAAAALWREAEAEAAAAGGEQEAQATAAAGEGDNGPGLQGP SREPPLADNLYDEDDDDDEGEEEEEEAAAAAIGYRDNLLFGDEIITNGFHSCESDEEDR ASHASSSDWTPRPRIGPYTFVQQHLMIGTDPRTILKDLLPETIPPELDDMTLWQIVIN ILSEPPKRKRKRDINTIEDAVKLLQECKKIIVLTGAGVSVSCGIPDFRSRDGIYARLAVD FPDLDPQAMFDIEYFRKDPRPFFKFAKEIYPGQFQPSLCHKFIALSDKEGKLLRNYT QNIDTLEQVAGIQRIIQCHGSFATASCLICKYKVDCEAVRGDIFNQVPRCPRCPADE PLAIMKPEIVFFGENLPEQFHRAMKYDKDEVDLLIVIGSSLKVRPVALIPSSIPHEVPQI LINREPLPHLHFDVELLGDGCDVIINELCHRLGGEYAKLCCNPVKLSEITEKPPRTQKEL AYLSELPTPLHVSEDSSSPERTSPDSSVIVTLLDQAAKSNDDLDVSESKGCMEEK PQEVQTSRNVESIAEQMENPDLKNVGSSTGEKNERTSVAGTVRKCWPNRVAKEQI SRRLDGNQYLFLPPNRYIFHGAEVYSDEDDVLSSSSCGSNSDSGTCQSPSLEEM EDESEIEEFYNGLEDEPDVPERAGGAGFGTDGDDQEAINAISVKQEVTDMNYP SN KS
Endotoxin	< 1 EU/µg by LAL
Purity	> 90% as determined by reducing SDS-PAGE.
Storage	Stored at -20 centigrade for 2 years from date of receipt. After reconstitution, it is stable at 4 centigrade for 1 week or -20 centigrade for longer (with carrier protein). It

 Tel: 1-631-559-9269 1-516-512-3133

 Email: info@creative-biomart.com  Fax: 1-631-938-8127

 45-1 Ramsey Road, Shirley, NY 11967, USA

is recommended to freeze aliquots at -20 or -80 centigrade for extended storage.

Reconstitution

It is not recommended to reconstitute to a concentration less than 100 µg/mL in ddH₂O.

GENE INFORMATION

Gene Name [SIRT1 sirtuin 1 \[Homo sapiens \(human\) \]](#)

Official Symbol [SIRT1](#)

Synonyms

SIRT1; sirtuin 1; sirtuin (silent mating type information regulation 2 homolog) 1 (*S. cerevisiae*), sirtuin (silent mating type information regulation 2, *S. cerevisiae*, homolog) 1; NAD-dependent deacetylase sirtuin-1; SIR2L1; hSIR2; hSIRT1; SIR2alpha; sir2-like 1; sirtuin type 1; SIR2-like protein 1

Gene ID [23411](#)

mRNA Refseq [NM_001142498](#)

Protein Refseq [NP_001135970](#)

MIM [604479](#)

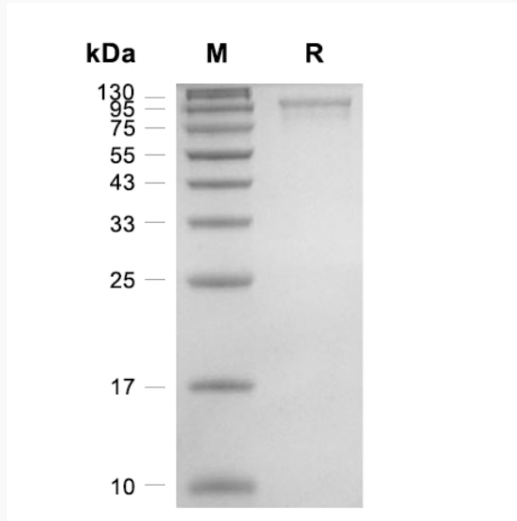
UniProt ID [Q96EB6](#)

 Tel: 1-631-559-9269 1-516-512-3133

 Email: info@creative-biomart.com  Fax: 1-631-938-8127


 45-1 Ramsey Road, Shirley, NY 11967, USA

Purity



 Tel: 1-631-559-9269 1-516-512-3133

 Email: info@creative-biomart.com  Fax: 1-631-938-8127

 45-1 Ramsey Road, Shirley, NY 11967, USA