

## Recombinant Human SIRT5 Protein, GST-tagged

Cat. No. SIRT5-25H Lot. No. (See product label)

### SPECIFICATION

<b>Product Overview</b>	Recombinant human SIRT5(33-310) protein with a N-terminal GST-tag was expressed in E. coli.
<b>Species</b>	Human
<b>Source</b>	E.coli
<b>ProteinLength</b>	33-310
<b>Description</b>	<p>This gene encodes a member of the sirtuin family of proteins, homologs to the yeast Sir2 protein. Members of the sirtuin family are characterized by a sirtuin core domain and grouped into four classes. The functions of human sirtuins have not yet been determined; however, yeast sirtuin proteins are known to regulate epigenetic gene silencing and suppress recombination of rDNA. Studies suggest that the human sirtuins may function as intracellular regulatory proteins with mono-ADP-ribosyltransferase activity. The protein encoded by this gene is included in class III of the sirtuin family. Alternative splicing of this gene results in multiple transcript variants.</p>
<b>Molecular Mass</b>	60.6 kDa
<b>Purity</b>	≥90% estimated by SDS-PAGE
<b>Applications</b>	ELISA, WB
<b>Stability</b>	≥ 9 months

 Tel: 1-631-559-9269 1-516-512-3133

 Email: [info@creative-biomart.com](mailto:info@creative-biomart.com)  Fax: 1-631-938-8127

 45-1 Ramsey Road, Shirley, NY 11967, USA

**Storage** Store it at -80 centigrade

**Storage Buffer** 50 mM NaPO<sub>4</sub>, pH 7.2, 100 mM NaCl, 5mM DTT, 20% glycerol

## GENE INFORMATION

**Gene Name** SIRT5 sirtuin 5 [ Homo sapiens (human) ]

**Official Symbol** SIRT5

**Synonyms**

SIRT5; sirtuin 5; SIR2L5; NAD-dependent protein deacylase sirtuin-5, mitochondrial; NAD-dependent deacetylase sirtuin-5; NAD-dependent lysine demalonylase and desuccinylase sirtuin-5, mitochondrial; silent mating type information regulation 2, S.cerevisiae, homolog 5; sir2-like 5; sirtuin type 5

**Gene ID** 23408

**mRNA Refseq** NM\_001193267

**Protein Refseq** NP\_001180196

**MIM** 604483

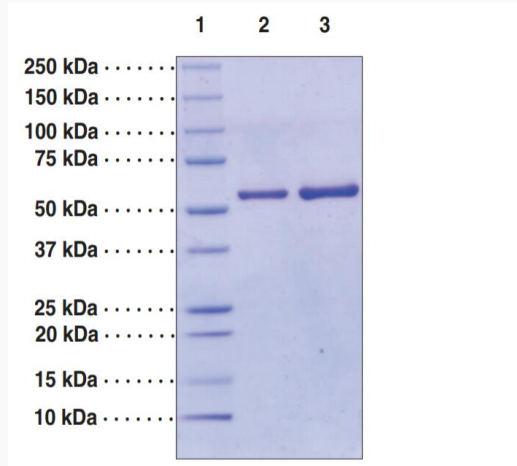
**UniProt ID** Q9NXA8

 Tel: 1-631-559-9269 1-516-512-3133

 Email: [info@creative-biomart.com](mailto:info@creative-biomart.com)  Fax: 1-631-938-8127

 45-1 Ramsey Road, Shirley, NY 11967, USA

**SDS-PAGE Analysis  
of SIRT5**



Lane 1: MW Markers; Lane 2: SIRT5 (4 µg); Lane 3: SIRT5 (2 µg). Representative gel image shown; actual purity may vary between each batch but protein will be  $\geq 90\%$  pure.

 Tel: 1-631-559-9269 1-516-512-3133

 Email: [info@creative-biomart.com](mailto:info@creative-biomart.com)  Fax: 1-631-938-8127

 45-1 Ramsey Road, Shirley, NY 11967, USA