

## Recombinant Human SIRT6 Protein, His-tagged

Cat. No. SIRT6-121H Lot. No. (See product label)

### SPECIFICATION

<b>Product Overview</b>	Active recombinant N-terminal His-tagged human SIRT6 protein (1-355) was purified from E. coli.
<b>Species</b>	Human
<b>Source</b>	E.coli
<b>ProteinLength</b>	1-355
<b>Description</b>	This gene encodes a member of the sirtuin family of NAD-dependent enzymes that are implicated in cellular stress resistance, genomic stability, aging and energy homeostasis. The encoded protein is localized to the nucleus, exhibits ADP-ribosyl transferase and histone deacetylase activities, and plays a role in DNA repair, maintenance of telomeric chromatin, inflammation, lipid and glucose metabolism. Alternative splicing results in multiple transcript variants encoding different isoforms.
<b>Molecular Mass</b>	43.7 kDa
<b>Purity</b>	≥80% as determined by SDS-PAGE
<b>Stability</b>	≥ 6 months
<b>Storage</b>	At -80 centigrade.
<b>Storage Buffer</b>	25 mM Tris-HCl, pH 8.0, with 100mM NaCl, 20% glycerol

 Tel: 1-631-559-9269 1-516-512-3133

 Email: [info@creative-biomart.com](mailto:info@creative-biomart.com)  Fax: 1-631-938-8127

 45-1 Ramsey Road, Shirley, NY 11967, USA

## GENE INFORMATION

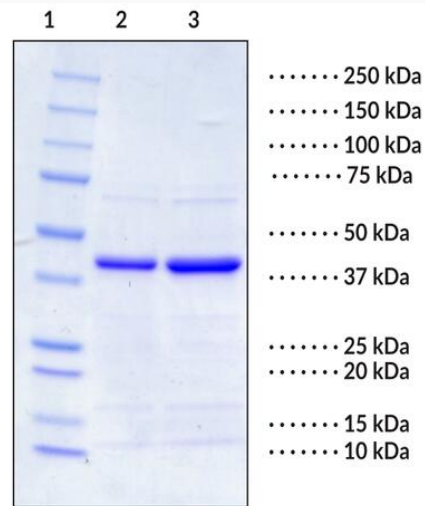
<b>Gene Name</b>	SIRT6 sirtuin 6 [ Homo sapiens (human) ]
<b>Official Symbol</b>	SIRT6
<b>Synonyms</b>	SIRT6; sirtuin 6; SIR2L6; NAD-dependent protein deacetylase sirtuin-6; SIR2-like protein 6; regulatory protein SIR2 homolog 6; sir2-related protein type 6; sirtuin type 6; EC 2.3.1.286
<b>Gene ID</b>	51548
<b>mRNA Refseq</b>	NM_016539
<b>Protein Refseq</b>	NP_057623
<b>MIM</b>	606211
<b>UniProt ID</b>	Q8N6T7

 Tel: 1-631-559-9269 1-516-512-3133

 Email: [info@creative-biomart.com](mailto:info@creative-biomart.com)  Fax: 1-631-938-8127

 45-1 Ramsey Road, Shirley, NY 11967, USA

**SDS-PAGE analysis  
of SIRT6**



Lane 1: MW Markers

Lane 2: SIRT6 (2 µg)

Lane 3: SIRT6 (4 µg)

 Tel: 1-631-559-9269 1-516-512-3133

 Email: [info@creative-biomart.com](mailto:info@creative-biomart.com)  Fax: 1-631-938-8127

 45-1 Ramsey Road, Shirley, NY 11967, USA