

Recombinant Human SIT1 Protein, Myc/DDK-tagged, C13 and N15-labeled

Cat. No. SIT1-4833H **Lot. No.** (See product label)

SPECIFICATION

Product Overview	SIT1 MS Standard C13 and N15-labeled recombinant protein (NP_055265) with a C-terminal MYC/DDK tag, was expressed in HEK293 cells.
Species	Human
Source	HEK293
Description	SIT1 (Signaling Threshold Regulating Transmembrane Adaptor 1) is a Protein Coding gene. Among its related pathways are TCR Signaling (Qiagen). Gene Ontology (GO) annotations related to this gene include kinase binding and SH2 domain binding.
Molecular Mass	21.1 kDa
AA Sequence	MNQADPRLRAVCLWTLTSAAMSRGDNCTDLLALGIPSITQAWGLWVLLGAVTLLFLI SLAAHLSQWTRGRSRSHPGQGGRSGESVEEVPLYGNLHYLQTGRLSQDPEPDQQD PTLGGPARAAEEVMCYTSLQLRPPQGRIPGPGTPVKYSEVVDSEPKSQASGPEPE LYASVCAQTRRARASFPDQAYANSQPAASTRTRPLEQKLISEEDLAANDILDYKDDD DKV
Purity	> 80% as determined by SDS-PAGE and Coomassie blue staining
Stability	Stable for 3 months from receipt of products under proper storage and handling conditions.

 Tel: 1-631-559-9269 1-516-512-3133

 Email: info@creative-biomart.com  Fax: 1-631-938-8127

 45-1 Ramsey Road, Shirley, NY 11967, USA

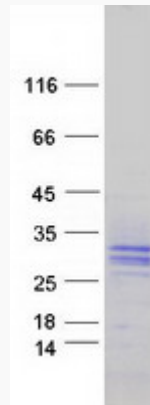
Storage	Store at -80 centigrade. Avoid repeated freeze-thaw cycles.
Concentration	50 µg/mL as determined by BCA
Storage Buffer	100 mM glycine, 25 mM Tris-HCl, pH 7.3.
GENE INFORMATION	
Gene Name	SIT1 signaling threshold regulating transmembrane adaptor 1 [Homo sapiens (human)]
Official Symbol	SIT1
Synonyms	SIT1; signaling threshold regulating transmembrane adaptor 1; suppression inducing transmembrane adaptor 1; signaling threshold-regulating transmembrane adapter 1; SHP2 interacting transmembrane adaptor; SIT; gp30/40; suppression-inducing transmembrane adapter 1; SHP2-interacting transmembrane adapter protein; SHP2-interacting transmembrane adaptor protein; RP11-331F9.5; MGC125908; MGC125909; MGC125910;
Gene ID	27240
mRNA Refseq	NM_014450
Protein Refseq	NP_055265
MIM	604964
UniProt ID	Q9Y3P8

 Tel: 1-631-559-9269 1-516-512-3133

 Email: info@creative-biomart.com  Fax: 1-631-938-8127

 45-1 Ramsey Road, Shirley, NY 11967, USA

SDS-PAGE



 Tel: 1-631-559-9269 1-516-512-3133

 Email: info@creative-biomart.com  Fax: 1-631-938-8127

 45-1 Ramsey Road, Shirley, NY 11967, USA