

Recombinant Human SIT1 Protein (Gln65-Ser196), N-His tagged

Cat. No. SIT1-5811H Lot. No. (See product label)

SPECIFICATION

Product Overview	Recombinant human SIT1 (Gln65-Ser196) fused with the N-terminal His tag was expressed in mammalian cells.
Species	Human
Source	Mammalian Cells
ProteinLength	Gln65-Ser196
Form	Lyophilized powder/frozen liquid
Molecular Mass	14.52 kDa
Purity	> 90 % as determined by SDS-PAGE
Notes	For research use only.
Storage	Use a manual defrost freezer and avoid repeated freeze thaw cycles. Store at 2 to 8 centigrade for one week. Store at -20 to -80 centigrade for twelve months from the date of receipt.
Storage Buffer	Supplied as solution form in PBS or lyophilized from PBS.
Reconstitution	Reconstitute in sterile water for a stock solution.

 Tel: 1-631-559-9269 1-516-512-3133

 Email: info@creative-biomart.com  Fax: 1-631-938-8127

 45-1 Ramsey Road, Shirley, NY 11967, USA

Shipping They are shipped out with dry ice/blue ice unless customers require otherwise.

GENE INFORMATION

Gene Name SIT1 signaling threshold regulating transmembrane adaptor 1 [Homo sapiens (human)]

Official Symbol SIT1

Synonyms SIT1; signaling threshold regulating transmembrane adaptor 1; suppression inducing transmembrane adaptor 1; signaling threshold-regulating transmembrane adapter 1; SHP2 interacting transmembrane adaptor; SIT; gp30/40; suppression-inducing transmembrane adapter 1; SHP2-interacting transmembrane adapter protein; SHP2-interacting transmembrane adaptor protein; RP11-331F9.5; MGC125908; MGC125909; MGC125910;

Gene ID 27240

mRNA Refseq NM_014450

Protein Refseq NP_055265

MIM 604964

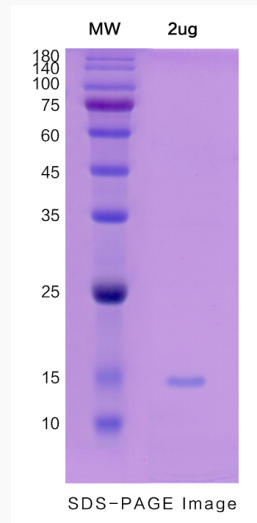
UniProt ID Q9Y3P8

 Tel: 1-631-559-9269 1-516-512-3133

 Email: info@creative-biomart.com  Fax: 1-631-938-8127

 45-1 Ramsey Road, Shirley, NY 11967, USA

SDS-PAGE



 Tel: 1-631-559-9269 1-516-512-3133

 Email: info@creative-biomart.com  Fax: 1-631-938-8127

 45-1 Ramsey Road, Shirley, NY 11967, USA